

1966

NOVEMBER 29th -
DECEMBER 3rd

ANNIE GET YOUR GUN



ANNIE GET YOUR GUN opened at the Imperial Theatre in New York City on May 16th, 1946, continuing there for 1,147 performances. The London Production at the Coliseum Theatre started on June 7th, 1947, running for 1,304 performances. The Medicine Hat Production starts November 29th, and will run through five performances.

Directed by
ADELE ARMSTRONG

Musical Director
LORNE HAVARD

Words and Music by
IRVING BERLIN

Best Wishes for "Straight Shooting" . . .

THE OGILVIE FLOUR MILLS CO. LTD.

Millers of the Famous Five Roses Flour



BEE LEWIS

Welcome Everyone

It is once again the privilege of the President of Medicine Hat Musical Theatre to extend to all of you, on behalf of the Board of Directors a hearty "Welcome!"

"Annie Get Your Gun," is our seventh venture into the fascinating world of Musical Theatre. We feel certain that you will thoroughly enjoy yourselves this evening as you become involved in the adventures and misadventures of the sharp-shooting Annie Oakley. The music of Irving Berlin has already earned its place in the Musical Hall of Fame and is familiar to most of you.

Mrs. Adele Armstrong—our Director—is well known to you as a talented and accomplished actress, pianist and vocalist, and is now making her debut as a director. Medicine Hat Musical Theatre is privileged to utilize her talents. Adele attended the Banff School of Fine Arts Musical Theatre Workshop for the past two summers. For the first of these sessions she was awarded a

Medicine Hat Musical Theatre Scholarship and received a Banff School of Fine Arts Scholarship this past summer.

We plan to continue to offer our scholarships to the Banff School of Fine Arts—Provincial Drama Workshop, Vocal Tuition Scholarships and the Annual Award to the Rotary Music Festival.

On behalf of the directors of Medicine Hat Musical Theatre I express a sincere "Thank You" to the cast, production committees, musicians and each and everyone who has helped make "Annie Get Your Gun" a success.

Our many thanks are extended to you the audience. Without your continued support all the endeavours of Medicine Hat Musical Theatre would not be possible.

Sit back—relax—enjoy yourselves, and when you do—show it! This is the only reward that anyone associated with the show receives.

BEE LEWIS,
President.

Congratulations . . .

THE MEDICINE HAT SOCIETY OF PHARMACISTS

PRESCRIPTIONS AND ORDERS

Aberdeen Pharmacy — Belsher Pharmacy Ltd. — Boylan's Drug Store Ltd. — Crescent Heights Rexall Drug Store — Duncan's Drug Store — Haysom-Buchanan Drug Ltd. — MacKenzie Drug Co. Ltd. - MacKenzie Drug, Crestwood — Sept's Drug Store — Tamblyn Rexall Drug Store.

Medicine Hat Musical Theatre

Presents

"Annie Get Your Gun"

Lyrics and Music by
IRVING BERLIN

Book by
HERBERT AND DOROTHY FIELDS

Director
ADELE ARMSTRONG

TOWNE THEATRE

November 29th to December 3rd, 1966

8:15 p.m.

BOARD OF DIRECTORS

President - Mrs. L. Lewis	Recording Secretary - Mrs. I. A. Macinnes
Vice-President - Mr. D. H. Medhurst	Treasurer - Mr. W. L. Townsend
Past-President - Dr. H. F. McKenzie	Corresponding Secretary - Mrs. A. T. Shand

Mr. H. Allergoth, Mr. R. E. Ashburner, Mrs. G. J. Emery, Mr. A. V. Johnston, Mr. J. A. Keenan, Cast Representative - Mr. G. P. Huckle.

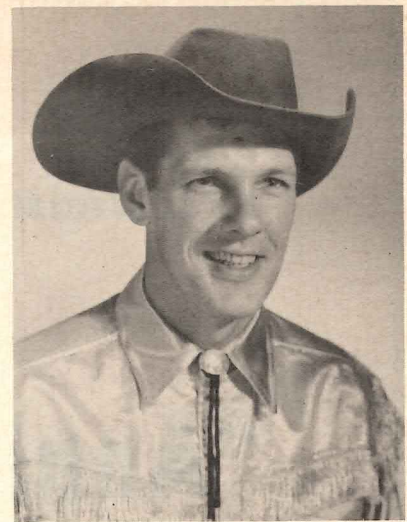
"Annie Get Your Gun" is presented by special arrangement with Howard E. Reinheimer, 120 - E. 56th Street, New York 22, N.Y.



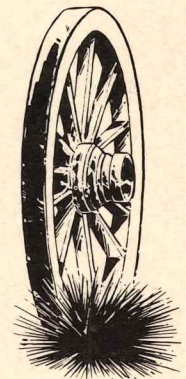
MURIEL WEISS
Annie Oakley



Photos Courtesy of McCorkle Studios



DON JACKSON
Frank Butler



THE OAKLEY CHILDREN

Back row, left to right: Nancy Pierce, Nan Taylor, Sue Cowan, Patrice McDonald, Cynthia McQuarrie, Deborah Steedman.

Second Row: Brenda Cowan, Deborah Lewis, Jamie Lundquist, Lee Durkin.

Front Row: Tony Bernhardt, Graham Anderson.

The Story of Annie Oakley

In the late 1800's, a young girl, together with her three sisters and one brother, left her poverty stricken home in Darke County, and, with her old Remington Rifle, literally "shot" her way to the top in show business. Her name - Phoebe Annie Oakley Mozee. Half a century later her true story blazed across Broadway with the opening of the smash musical "Annie Get Your Gun."

Regrettably, Annie Oakley never knew she would one day be immortalized on the musical theatre stage, for she died in 1926—just 20 years before the show opened. Frank Butler survived her by only 18 days.

CAST

(In Order of Appearance)

Little Girl Catherine Lewis, Patricia Renner	Timothy Otto Bernhardt
Little Boy Neil Humphreys	Andy Glen Freeman
Charlie Davenport Hector Hicks	Clyde Dennis Baresco
Iron Tail Derek Werner	John Dwayne Sullivan
Yellow Foot Dale Hauck	Fred Jack Plumb
White Horse Peter Poulsen	Pawnee's Messenger Ron Edwards
Mac (Property Man) Ernie Bonin	Major Domo Gerald Schimpf
Foster Wilson Dave Goldie	Mr. and Mrs. Schuyler Adams Dave Goldie and Heather Dickau
Dolly Tate Marg Brown	Dr. and Mrs. Percy Ferguson Palmer Huckle and Laura Newman
Winnie Tate Pearl Muir	Mr. and Mrs. Ernest Henderson Jack Plumb and Dorothy Nash
Tommy Keeler Richard Jones	Mrs. Sylvia Potter Porter Lilah Head
Frank Butler Don Jackson	Mr. Clay Terry Lauder
Annie Oakley Muriel Weiss	Mr. Lockwood Glen Freeman
Minne (Annie's Sister) Sue Cowan, Nan Taylor, Patrice McDonald	Braves Gary Ulrich, Lloyd Hart
Jessie (another sister) Nancy Pierce, Deborah Lewis, Deborah Steedman	Girl Singers — Marie Bernhardt, Margaret Bertram, Julia Bruins, Anna Faye Collins, Heather Dickau, Sandra Foss, Lilah Head, Carol Helander, Glenda Gay Huckle, Donna Lemna, Dorothy Nash, Marion Nash, Laura Newman, Heather Reuber, Judy Shand, Joy Sheuer.
Nellie (another sister) Jamie Lundquist, Brenda Cowan, Cynthia McQuarrie	Men Singers — Otto Bernhardt, Ron Edwards, Glen Freeman, Palmer Huckle, Hart Mueller, Jack Plumb, Dwayne Sullivan.
Little Jake (Annie's brother) Graham Anderson, Lee Durkin, Tony Bernhardt	Girl Dancers — Elizabeth Farris, Laura Gould, Heather Hall, Marilyn Lough, Morag Morrison, Jean Van Wert.
Colonel William Cody (Buffalo Bill) Ron Miller	Boy Dancers — Dennis Baresco, Ron Edwards, Glen Freeman, Terry Lauder, Hart Mueller, Dwayne Sulli- van.
Mrs. Little Horse Eleanor Townsend	
Mrs. Black Tooth Lorraine Humphreys	
Train Conductor Palmer Huckle	
Waiter Otto Bernhardt	
Porters Jack Thompson and Dave Goldie	
Major Gordon Lillie (Pawnee Bill) Wayne Craven	
Chief Sitting Bull Leo Cornet	
Mabel Marion Nash	
Louise Joy Sheuer	
Nancy Donna Lemna	

Bouquets to "Annie Get Your Gun" . . .

Harward's House of Flowers

A Complete Floral Service

Third Street - Medicine Hat

WESTERN FINERY!

from . . .

Your Medicine Hat

CO-OP SHOPPING CENTRE

430 - 6th Ave. S.E. — 14 St. S.W.

Medicine Hat

GREETINGS FROM

THE HOUSES OF HOSPITALITY

THE CANTALINI HOTELS

The Assiniboia - The Cosmopolitan - and Corona Hotels

Medicine Hat, Alberta

IGA

Best wishes for another Great Production from . . .

TAYLOR'S IGA FOOD STORE

310 Division Avenue S.W.

Synopsis of Scenes

ACT I

- SCENE I The Wilson House (A summer hotel on the outskirts of Cincinnati, Ohio - July)
- SCENE II A Pullman Parlour in an Overland Steam Train. (Six weeks later).
- SCENE III Fair Grounds at Minneapolis, Minnesota. (A few days later)
- SCENE IV A path to Annie's tent
- SCENE V Indian Encampment on Fair Grounds. (Later that night)

INTERMISSION — TEN MINUTES

ACT II

- SCENE I The Deck of a Cattle Boat. (Eight months later)
- SCENE II Ballroom of the Hotel Brevoort, New York, N.Y. (The next night)
- SCENE III Governor's Island. (Next morning)
- SCENE IV Governor's Island. (That afternoon)

Good Wishes "For Another Great Production" from your

MEDICINE HAT INSURANCE AGENTS ASSOCIATION

Craven, Hall & Co. — Thomson Fisher Insurance Agency Ltd. — Mantz Custom Realty Ltd. — Lees Agency — Anderson & DesHarnais Ltd. — All Risk Insurance.

TO A SUCCESSFUL PRESENTATION

YOUR LADIES' & CHILDREN'S WEAR ASSOCIATION

The Cinderella Shop — Darling Dress Shop — The Lady Fair — Hollinsworth & Co.
Ltd. — Betty Shops Ltd. — Raber Departmental Store — The Petite Shop — Milady Shop

Musical Numbers

ACT I

OVERTURE

"Buffalo Bill"	Charlie and Ensemble
"I'm a Bad, Bad Man"	Frank, Girl Singers, Dancing Ensemble
"Doin' What Comes Naturally"	Annie, Children and Wilson
"The Girl That I Marry"	Frank
"You Can't Get a Man With a Gun"	Annie
"Show Business"	Annie, Frank, Buffalo Bill and Charlie
"They Say It's Wonderful"	Annie and Frank
"Moonshine Lullaby"	Annie, Porters, Waiter, Children
"I'll Share It All With You"	Winnie and Tommy
Reprise — "Show Business"	Annie
"My Defences Are Down"	Frank and Boys
"Indian Dance"	Dancing Ensemble
"I'm An Indian Too"	Annie
"Adoption Dance"	Annie, Sitting Bull and Dance Ensemble
Reprise — "You Can't Get a Man With a Gun"	Annie

ENTR'ACTE

ACT II

"Lost in His Arms"	Annie
"Who Do You Love?"	Winnie and Tommy
"I Got the Sun in the Morning"	Annie and Company
Reprise — "They Say It's Wonderful"	Annie and Frank
Reprise — "The Girl That I Marry"	Frank
"Anything You Can Do"	Annie and Frank
Reprise — "Show Business"	Ensemble
Finale — "They Say It's Wonderful"	Company

Compliments of . . .

Goodyear Tire and Rubber Company of Canada Limited

MEDICINE HAT PLANT



LORNE HAVARD
Musical Director



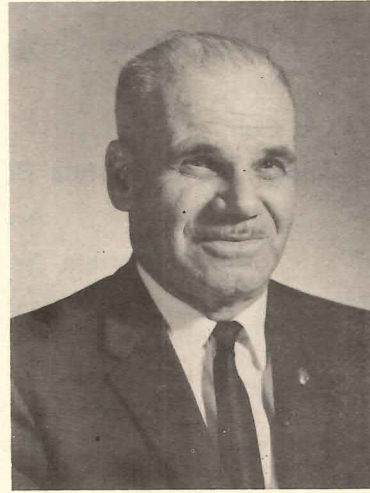
ADELE ARMSTRONG
Director



ROD ASHBURNER
Producer



JEAN VAN WERT
Dance Director



RON McAFFER
Stage Manager



ISABEL SHARP
Set Designer

ROUND-UP !

ED SEPT & SONS LTD.

Your Friendly Firestone Store

221 North Railway Street
Medicine Hat, Alberta

STRAIGHT SHOOTING !

Marshall's Book Store Ltd.

621 - 2nd Street

and

Cypress Business Equipment

Medicine Hat, Alberta

You have seen the leading Musical Theatre Group of Medicine Hat. Now see your leading Jewellers of Medicine Hat.

ADAM'S JEWELLERY

Third Street S.E.

WRIGHT'S JEWELLERY

Sixth Avenue S.E.

GEORGE'S HOUSE OF DIAMONDS

Third Street S.E.

SCORE A WINNER !

Hawthorne's Men's Wear Ltd.

"Specializing in Men's Apparel Only"

PRODUCTION CREDITS

PRODUCED BY ROD ASHBURNER

DIRECTOR ADELE ARMSTRONG
MUSICAL DIRECTOR LORNE HAVARD
DANCE DIRECTOR JEAN VAN WERT
TECHNICAL ADVISOR HENRY ALLERGOOTH
ASSISTANT TO THE PRODUCER HAROLD McBAIN
COMPTROLLER LARRY TOWNSEND
STAGE MANAGER RON McAFFER
SET DESIGN ISABEL SHARP
SET CONSTRUCTION HARRY STEWART
Assisted by: Allen Bishop, John Maginel, Jim Osgood, Pat Osgood, Marius Peters, Wayne Schaufele
Painting: Blanche Allergooth, Bing Masley, Valarie Nittle, Marshall Palmer, Geraldine Paulson, Brian Snowden, Joyce Stobbs.
LIGHTING BRUNO SCHREIN
Harry Van Winkle, Robert Rose
SOUND ELAINE RAMM
Terry Lauder, Leo Cornet
COSTUMES AURLINE LEWIS
Assisted by: Jo Barsness, Beryl Cowan, Beth Findlay, Elsie Fish, Amy Hargrave, Thelma Johnston, Eleanor Madiff, Kay McBain, Frances McQuiggin, Esther Miller, Gerry Millican, Helen Peterson.
PROPERTIES DOROTHY GRANT
Assisted by: Janet Gibson, Bert Maltin, Sybil Maltin, Glenys Parker, Nancy Ruth Sissons.
MAKE-UP MANFRED SIEVERT
Assisted by: Carmen Jackson, John Komanchuk, Pat Komanchuk, Morag Morrison, Margaret Phillips, Carol Wahl.
ASSISTANTS TO THE DIRECTOR
DEEN HAMILTON, ELEANOR TOWNSEND
Publicity Henry Allergoth
Advertising Jim Keenan
Box Office and Front of House Marion Emery
Arnold Johnson, Jim Keenan
Entertainment Marion Emery

Tickets Isabel Macinnes
Dr. H. F. McKenzie
Program Don Medhurst, Marion Shand
Cover Design Jim Marshall
Photographs McCorkle Studios
Rehearsal Pianists Dorothy Olmstead,
Mabel Pedersen
ORCHESTRA Under the auspices of
MEDICINE HAT LITTLE SYMPHONY ORCHESTRA
Mabel Pedersen at the Piano.
First Violins: Sylvia Gibbs, Bob Millar, Ed Pederson,
Robin Pedersen
Second Violins: Harry Turner, Eric Erdman
Bass: Ron May, Alf Dutton
Woodwinds: George Priest, Alex Shand, Bob Eisenbarth, Ken Wahl, McLaren Ewart
Brass: Floris Bouman, Gerritt Haagsma, Clarence Heringer, Bob Olmstead, Dorothy Hanley
Percussion: Jim Kozmyk, Murray Irving
* * *

Medicine Hat Musical Theatre wishes to acknowledge with thanks assistance given by the following: Levinson's Music Store for Box Office facilities; C.P.R.; Mr. A. Dederer and Sons; T. Eaton Co. Ltd.; Hutchings & Sharp; F. W. Woolworth Co.; CHAT Radio and TV; Medicine Hat News Ltd.
Thanks are also extended to all those not mentioned here who have contributed in any way to the success of "Annie Get Your Gun."

SCORE A WINNER . . .

STONE FURS

"If You Don't Know Your Furs . . . Know Your Furrier"

530 Second Street

Medicine Hat

Every success to "Annie Get Your Gun"

JIM E. NEWTON

INVESTORS GROUP

For Tax Savings and

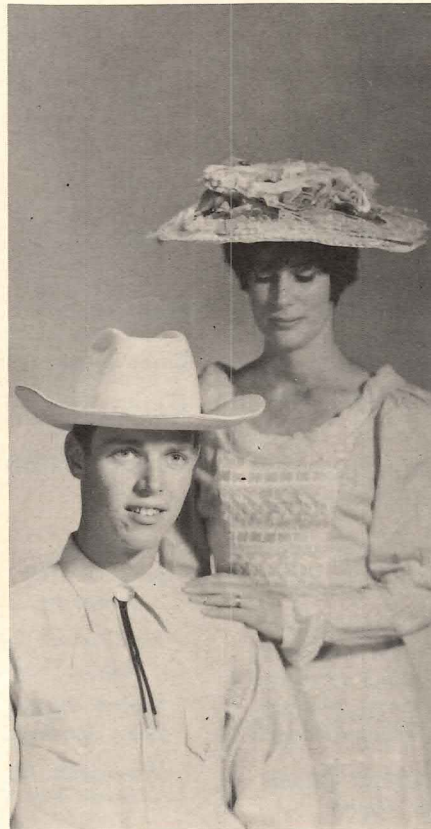
Mutual Fund Investments

Phone 526-4252 — 144 - 2nd St. S.W.



WAYNE CRAVEN
LEO CORNET

Pawnee Bill
and Sitting Bull



PEARL MUIR
RICHARD JONES
Winnie and Tommy



RON MILLER
MARG BROWN
HECTOR HICKS

Buffalo Bill, Dolly
and Charlie

If "You Can't Get A Man With A Gun"

See

HUTCHINGS & SHARP LTD.

Riding Goods - Saddlery - Western Clothing

MEDICINE HAT

SCORE A WINNER !

NORTHWEST

NITRO-CHEMICALS

STRAIGHT SHOOTING !

DOUGLAS BAKERIES

QUALITY BAKED GOODS

ROUND-UP !

UNION MILK CO. LTD.

"CRYSTAL"

233 - 5th Street S.E. - Medicine Hat

**MEDICINE HAT
FURNITURE
ASSOCIATION**

**BEVERIDGE'S FURNITURE LTD.
MILROY'S FURNITURE VILLAGE LTD.
J. J. MOORE & SON LTD.
PARKER'S FURNITURE (Medicine Hat) LTD.
RIC & MAC LIMITED**



DANCE ENSEMBLE

Back Row, left to right: Hart Mueller, Dennis Baresco, Glen Freeman, Dwayne Sullivan, Ron Edwards.

Front Row: Morag Morrison, Marilyn Lough, Jean Van Wert, Heather Hall, Elizabeth Farris, Laura Gould.

Photo Courtesy of
McCorkle Studio

WHOOPEE !!!

The Park Lane Motor Hotel

6th Street and Red Deer Drive S.W.

Medicine Hat, Alberta

MAKE A HIT !

FLEMING'S MUSIC HOUSE

See Fleming's First for Musical Hits

"Musical theatre records available"

657 - 2nd Street S.E.

Medicine Hat



HIT THE BULL'S-EYE !

ALL THE BEST FROM

**THE
MEDICINE MAN**

BE ON TARGET !

SAFeway STORES

3 Stores to Serve You

Division Avenue on the Hill - 3rd Street Downtown
8th Street N.W., Crescent Heights

Medicine Hat

Alberta

Best Wishes for Success

to

*Medicine Hat Musical Theatre
and Cast*



MEDICINE HAT BRICK AND TILE COMPANY, LIMITED
REDCLIFF PRESSED BRICK COMPANY
REDCLIFF PREMIER BRICK COMPANY
NORTHWEST CERAMICS LTD. - EDMONTON
NATIONAL PORCELAIN
ALBERTA CLAY PRODUCTS

MASON & RISCH PIANOS AT EATON'S



The Cecilian

Add distinction and enjoyment to your home with this high quality piano. See the beautiful compact design . . . listen to the magnificent tone, check the high quality features . . . then plan to bring the joy of music into your home now. 38" piano with pull-up action, full 88 note keyboard, free leg model with brass ferrule and casters. High quality designed case in art walnut.

COMPLETE WITH BENCH

NO DOWN PAYMENT

PRICE \$599.00

THE T. EATON CO. LIMITED
CANADA
MEDICINE HAT BRANCH

36 Monthly Payments

\$19.00