

1968



**where's
charley?**

AINSCOUGH

Best Wishes For Success From ...

THE OGILVIE FLOUR MILLS CO. LTD.

Millers of the Famous Five Roses Flour



BEE LEWIS

Welcome Everyone

Where's Charley?

He is right here with you tonight!

The Medicine Hat Musical Theatre executive with the competent and imaginative direction of John Komanchuk - the musical talents of Adele Armstrong - choreography of Jean Van Wert and production know-how of E.W.N. "Skip" MacDonald are bringing him to you in this eighth production of Medicine Hat Musical Theatre. We are certain you will enjoy your encounter with "Charley" and his friends.

All the entertainment that occurs on stage would not be possible without the very able efforts of the "other people" whom one doesn't see and are a very important part of any production.

Our thanks and appreciation are extended to the Musicians, Costume, Set Design, Stage Management and Make-up Committees for their contribution to the success of "Where's Charley?"

We thank you, the audience, for your patronage and hope you will continue to support Musical Theatre in the future.

BEE LEWIS,
President.

Photo Courtesy of McCorkle Studios

Congratulations . . .

THE MEDICINE HAT SOCIETY OF PHARMACISTS PRESCRIPTIONS AND ORDERS

Aberdeen Pharmacy — Belsher Pharmacy Ltd. — Boylan's Drug Store Ltd. — Crescent Heights Rexall Drug Store — Duncan's Drug Store — Buchanan Drug Ltd. — MacKenzie Drug Co. Ltd.-MacKenzie Drug, Crestwood—Sept's Drug Store — Tamblyn Rexall Drug Store.

Medicine Hat Musical Theatre

Presents

"Where's Charley?"

A MUSICAL COMEDY

(Based on "Charley's Aunt" by Brandon Thomas)

Music and Lyrics by
FRANK LOESSER

Book by
GEORGE ABBOTT

Director
JOHN KOMANCHUK

TOWNE THEATRE

November 19th to November 23rd, 1968

8:15 p.m.

BOARD OF DIRECTORS

President - Mrs. L. Lewis	Recording Secretary - Mrs. A. Macinnes
Vice-President - Mr. Ian MacDonald	Treasurer - Mr. W. L. Townsend
Past President - Mr. R. E. Ashburner	Corresponding Secretary - Mrs. A. T. Shand

Mrs. G. J. Emery, Mr. W. H. Hayne, Mr. A. V. Johnston, Dr. H. F. McKenzie
Dr. D. S. Willoughby, Cast Representative - Mr. G. P. Huckle.

"Where's Charley?" is presented through special arrangement with Music Theatre International, 119 West 57 Street, New York N.Y.



HECTOR HICKS
Charley Wykeham



ANN LONSON
Amy Spettigue

Photos Courtesy of McCorkle Studios

Where's Charley - - - ?

This musical comedy is based on the classic farce Charley's Aunt. The story is set at Oxford University, England, during the year 1892. Charley Wykeham impersonates his maiden aunt from Brazil so that an intimate party for two couples might have a chaperon. Much hilarity occurs when this "aunt" is madly pursued and courted by an Oxford lawyer who believes that she is a lady of great wealth. When Charley is occasionally able to discard his disguise he successfully pursues his quest for Amy Spettigue, niece of the foolish lawyer.

Charley's antics, while dressed in outlandish female attire, provide many laughs. He finds himself in such places as a ladies' powder room and in an athletic love scene with a vigorous old man and he charms the audience with the memorable song "Once in Love with Amy".

The main love song is "My Darling" which for several weeks occupied the number one position on the Hit Parade. Other musical numbers include a sprightly rendition of Frank Loesser's "Make a Miracle" and the old favorite "The New Ashmolean Marching Society and Students' Conservatory Band" which is a vigorous march quite in keeping with the energetic action of this family musical.

CAST

(In Order of Appearance)

Brassett Peter Condon
 Jack Chesney Neil Millar
 Charley Wykeham Hector Hicks
 Kitty Verdun Debbie Lewis
 Amy Spettigue Ann Lonson
 Wilkinson Ian MacDonald
 Sir Francis Chesney Doug Third
 Mr. Spettigue Lorne Havard
 Donna Lucia D'Alvadorez Pat Freeman
 Photographer Palmer Huckle
 Reggie Wayne Spears

Boys and Girls — Nancy Bartels, Linda Bennett, Rita Beny, Betty Bond, Julie Bruins, Elizabeth Bubbel, Rhonda Carlson, Ida Chambers, Bette Crawford, Susan Eaton, Shirley Gaffney, Lilah Head, Glenda Huckle, Donna Kessler, Patti Kessler, Eileen Maier, Bonnie McGregor, Elizabeth Morton, Betty Park, Gena Paul, Elaine Ramm, Terri Read, Jo Soklofske, Evan Tonin, Eleanor Townsend, Penny Stone, Dennis Baresco, Otto Bernhardt, Manvel Estaban, Glenn Freeman, David Head, Palmer Huckle, Don Jackson, Arnold Kanewischer, Helmar Kujat, Ian MacDonald, Bob Millar, Bill Montgomery, Wayne Spears, Neil Tolliday.

Majorettes — Linda Bennett, Lorraine Dalla Longa, Janice David, Robin Werre.

New Ashmolean Marching Society — Betty Bond, Lilah Head, Dennis Baresco, David Head, Bonnie McGregor, Susan Eaton, Terri Read, Patti Kessler, Rhonda Carlson, Donna Kessler, Shirley Gaffney, Bette Crawford, Elizabeth Morton, Penny Stone, Nancy Bartels, Elizabeth Bubbel, Julie Bruins, Patty Hanegan.

Pernambuco Dancers — Bette Crawford, Susan Eaton, Eileen Maier, Terri Read, Penny Stone, Helmar Kujat, Bill Montgomery, David Head, Dennis Baresco, Glenn Freeman.

Red Rose Cotillion Dancers — Penny Stone, Terri Read, Susan Eaton, Bette Crawford, Eileen Maier, Linda Bennett, Shirley Gaffney, Debbie Lewis, Glenn Freeman, Don Jackson, David Head, Ian MacDonald, Dennis Baresco, Helmar Kujat, Bill Montgomery, Neil Millar.

Gossips — Terri Read, Evan Tonin, Julie Bruins, Glenda Huckle, Susan Eaton, Penny Stone, Patty Hanegan.

Bouquets to "Where's Charley?"

Harward's House of Flowers

Serving Medicine Hat for 30 Years

Across From Woolworths - Medicine Hat

COMPLIMENTS OF

Your Medicine Hat CO-OP ASSOCIATION

430 - 6th Ave. S.E. and 14 St. S.W.
Medicine Hat



"The Shop of Quiet Elegance"
 560 SECOND ST. S.E. - PHONE 527-6969
 MEDICINE HAT, ALBERTA

BEST OF LUCK

GARDNER MOTORS (1962) LTD.

The place to get
 "The Dodge fever"

Best wishes for another Great Production from . . .

IGA

TAYLOR'S IGA FOOD STORE

310 Division Avenue S.W.

Synopsis of Scenes

ACT I

- | | |
|-----------|-----------------------------|
| SCENE I | A Room at Oxford University |
| SCENE II | A Street |
| SCENE III | The Garden |
| SCENE IV | Where the Nuts Come From! |

INTERMISSION — TEN MINUTES

ACT II

- | | |
|-----------|---------------------|
| SCENE I | The Garden |
| SCENE II | A Street |
| SCENE III | Where the Ladies Go |
| SCENE IV | A Garden Path |
| SCENE V | The Ballroom |

Good Wishes "For Another Great Production" from your

MEDICINE HAT INSURANCE AGENTS ASSOCIATION

Craven, Hall & Co. — Thomson Fisher Insurance Agency Ltd. — Mantz Custom Realty Ltd. — Lees Agency — Anderson & DesHarnais Ltd. — All Risk Insurance.

TO A SUCCESSFUL PRESENTATION

YOUR LADIES' & CHILDREN'S WEAR ASSOCIATION

The Cinderella Shop — Darling Dress Shop — The Lady Fair — Hollinsworth & Co. Ltd. — Joy's Style Shop Ltd. — Raber Departmental Store — The Petite Shop — Milady Shop

Musical Numbers

ACT I

OVERTURE

- "The Years Before Us" Male Chorus
"Better Get Out of Here" Amy, Kitty, Charley, Jack
"Ashmolean Marching Society" Jack, Kitty, Amy and Chorus
"My Darling, My Darling" Jack and Kitty
"Make a Miracle" Amy and Charley
"Serenade with Asides" Spettigue
"Lovelier than Ever" Sir Francis, Donna Lucia and Chorus
"The Woman in His Room" Amy
"Pernambuco" Chorus and Dance

ENTR'ACTE

ACT II

- "Where's Charley?" Jack, Reggie and Chorus
"Once in Love with Amy" Charley
"The Gossips" Girls
"At the Red Rose Cotillion" Jack, Kitty, Chorus and Dance
"My Darling, My Darling" — Finale — Ensemble

Compliments of . . .

Goodyear Tire and Rubber Company of Canada Limited
MEDICINE HAT PLANT



ADELE ARMSTRONG
Musical Director



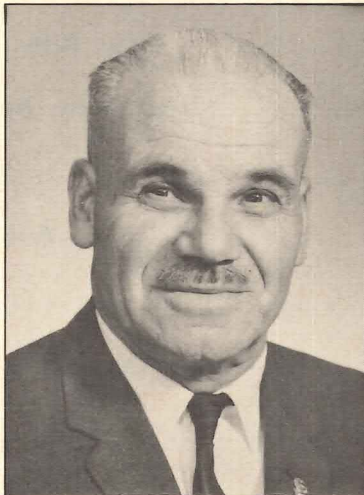
JOHN KOMANCHUK
Director



SKIP MACDONALD
Producer



JEAN VAN WERT
Dance Director



RON McAFFER
Stage Manager



JOANNE NEEDHAM
Set Designer

CONGRATULATIONS!

ED SEPT & SONS LTD.

Your Friendly Firestone Store

221 North Railway Street
Medicine Hat, Alberta

BEST WISHES

Marshall's Book Store Ltd.

621 - 2nd Street

and

Cypress Business Equipment

Medicine Hat, Alberta

Congratulations . . .

BLACK HARDWARE LTD.

and

BLACK'S SPORT CENTRE

MEDICINE HAT, ALBERTA

BEST WISHES

Hawthorne's

Mens Wear Ltd.

640 - 3rd Street S.E.

"First in the Hat since 1896"

PRODUCTION CREDITS

DIRECTOR JOHN KOMANCHUK
 PRODUCER SKIP MACDONALD
 ASSISTANT PRODUCER DR. H.F. MCKENZIE
 MUSICAL DIRECTOR ADELE ARMSTRONG
 TECHNICAL DIRECTOR RON McAFFER
 COMPTROLLER LARRY TOWNSEND
 DANCE DIRECTOR JEAN VAN WERT
 ASSISTED BY JOHN VANDENBERG
 SET DESIGN JOANNE NEEDHAM
 COSTUME MISTRESS LOUISE DESHARNAIS

ASSISTANT COSTUME MISTRESS GAIL MacDONALD
 Assisted by: Beth Findlay, Billie MacDonald, Joyce Chandler, Gerry Millican, Irene Reichel, Evelyn Hausauer, Dorothy Grant, Minnie Strande, Eva Weiler, Nancy Ruth Sissons, Fran Lerner, Marsha McQuiggan, Aileen Wilkins, Carole Wahl, Kay McBain, Amy Hargrave, Betty Biddel, Peggy Archibald, Joanne Needham.

PROPERTIES EVELYN KLEIS
 Assisted by: Joanne Needham

MAKE-UP MANFRED SIEVERT
 Assisted by: Ron Miller, Esther Miller, Ann Finch, Pat Komanchuk, Margaret Phillips, Carole Wahl, Margaret Herringer, Gabrielle Moro, Gertrude Lizee, Diane Snaith.

SET CONSTRUCTION Joanne Needham, Ron McAffer, Valerie Sept, Valerie Hunter, Janice Medhurst, Donna Strachan, Marion Flett, Ann Gunn, Sharon Congdon, Sylvia Peterson, Evelyn Kleis, Norm Bruins, Thelma Renner, Gina Flett, Lorine Marshall.

STAGE MANAGER RON McAFFER
 Assistant Stage Manager: Norman Bruins.
 Assisted by: Randy Bray, Robert Rose, Brian Ames, Gordon Baumbach, Wayne Schaufele, John Sellhorn, Roy Crews, Randy Shirley.

LIGHTING BRUNO SCHRIEN
 Assisted by: Harry Van Winkle, Dave Russell, Brenda Hoffman, Lauchlin McKenzie, Harold McBain.

SCRIPT DEEN HAMILTON

CALLS RON MILLER

PUBLICITY AND PUBLIC RELATIONS
 ROD ASHBURNER, WALLY HAYNE

Front of House Marion Shand
 Entertainment Marion Emery
 Tickets and Box Office Isabel Macinnes
 Program Arnold Johnston
 Don Willoughby
 Cover Design Craig Ainscough
 Photographs McCorkle Studios
 Back of House Dave Wilkins
 Assisted by: Aileen Wilkins, Bob Capp, Shirley Capp.

INSTRUMENTAL SCORE:

Piano - Adele Armstrong
 Organ - Alex Shand
 Drums - Fred Link

ASHMOLEAN BAND:

Trumpets - Jim Burgess, Bill Noviski
 Trombones - Bob Olmstead, Ralph Palmer
 Tuba - Jack Coleman
 Flute - Alex Shand
 Bass Fiddle - Pete Bonesky
 Drums - Fred Link

The Medicine Hat Musical Theatre acknowledges with thanks the assistance given by the following: CHAT Radio and TV, Medicine Hat News Ltd., Rosery Florist, Ltd., Public Library, Heintzman Piano Co., Fykes Music Centre, Levinson's Music Store, I.G.A., Public School Board, Recreation Commission, Senior Citizens Club, Fifth Avenue United Church, Rabers Dept. Store, Hawthorne's Mens Wear Ltd., Joyline Transport, McCorkles Studios, Alberta Motor Association, Holden's Cleaning Service, Drama Dept. University of Alberta, Edmonton, T. Eaton Co. Ltd., F.W. Woolworth Co. Ltd.

EVERY SUCCESS TO "WHERE'S CHARLEY?"

STONE FURS

"If You Don't Know Your Furs . . . Know Your Furrier"

530 Second Street

Medicine Hat

Best Wishes . . .

FYKE'S MUSIC CENTRE

A Full Line Of Musical Instruments

EVERY SUCCESS TO WHERE'S CHARLEY"

SAFeway STORES

THREE STORES TO SERVE YOU

DIVISION AVENUE
ON THE HILL

THIRD STREET
DOWNTOWN

EIGHTH STREET N.W.
CRESCENT HEIGHTS



PETER CONDON
Brassett

DOUG THIRD
Sir Francis Chesney

PAT FREEMAN
Donna Lucia D'Alvadorez

Photo Courtesy of McCorkle Studios

CONGRATULATIONS...

See

HUTCHINGS & SHARP LTD.

Riding Goods - Saddlery - Western Clothing

MEDICINE HAT

THE BEST FROM . . .

NORTHWEST

NITRO-CHEMICALS

A Credit To Medicine Hat

CONGRATULATIONS

RU-HAR SHOES

GARDYNE SHOES LTD.

MEDICINE HAT, ALBERTA

WISHING YOU EVER SUCCESS . . .

UNION MILK CO. LTD.

"CRYSTAL"

233 - 5th Street S.E. - Medicine Hat

GREETINGS . . .

From your Family Furniture Store

MOORE'S

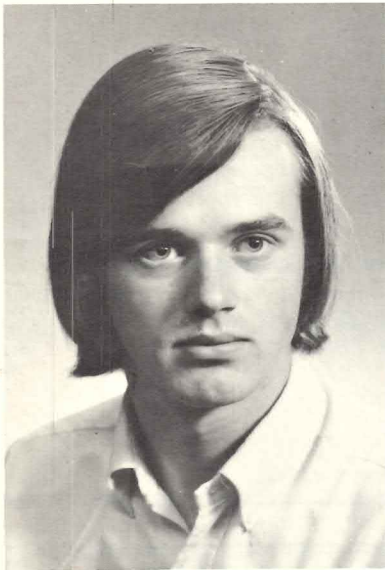
Basement 412 - 3rd St. S.E. Medicine Hat

Congratulations from . . .

HAT HARDWARE

645 - 3rd Street S.E. Medicine Hat

Photos Courtesy of McCorkle Studios



NEIL MILLAR

Jack Chesney



DEBBIE LEWIS

Kitty Verdun



LORNE HAVARD

Mr. Spettigue

CONGRATULATIONS FROM . . .

The Park Lane Motor Hotel

6th Street and Red Deer Drive S.W.

Medicine Hat, Alberta

HERE'S TO ANOTHER HIT!

FLEMING'S MUSIC HOUSE

See Fleming's First for Musical Hits

"Musical theatre records available"

526 - 3rd St. S.E.

Medicine Hat

Congratulations . . .

EATON'S

MEDICINE HAT BRANCH

Wishing You Every Success . . .

**SIMPSONS - SEARS
MAIL ORDER STORE**

MEDICINE HAT, ALBERTA

Best Wishes for Success

to

*Medicine Hat Musical Theatre
and Cast*



MEDICINE HAT BRICK AND TILE COMPANY LIMITED
NORTHWEST BRICK AND TILE
REDCLIFF PRESSED BRICK COMPANY
REDCLIFF PREMIER BRICK COMPANY
NATIONAL PORCELAIN

GREETINGS FROM

THE HOUSES OF HOSPITALITY

THE CANTALINI HOTELS

THE ASSINIBOIA

THE COSMOPOLITAN



Medicine Hat, Alberta



**ALL THE BEST FROM
THE MEDICINE HAT NEWS**