

CAROUSEL



Best Wishes For Success From ...

THE OGILVIE FLOUR MILLS CO. LTD.

Millers of the Famous Five Roses Flour

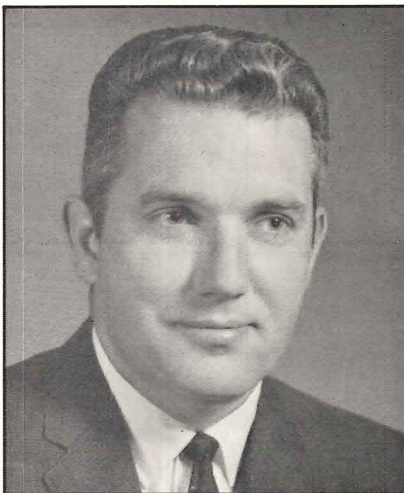


A TRIBUTE

The late Henry Allergoth was the first President in 1960 of the Medicine Hat Musical Theatre. He directed "South Pacific" in 1963 and served on the Board from 1962 to 1967, subsequently he was elected an Honorary Director.

The Musical Theatre will deeply miss a staunch and dedicated supporter for it was largely through his efforts that this organization was founded.

Good Evening



The Medicine Hat Musical Theatre Executive welcomes you to "Carousel" our 1972 presentation. We feel this is a highly enjoyable musical to delight and entertain you.

John Komanchuk, our capable and talented director, leads the production which includes the outstanding musical ability of Adele Armstrong — the sparkingly dance routines of Elizabeth Farris — the beautiful and artistic set designs of Donna McLean and Ron McAffer as our experienced and energetic producer. The cast members, backstage, and lighting personnel, musicians, costumes, properties, and make-up committees have all given enthusiastic support to bring to you a successful show and to all these people, a sincere "Thank You" from the Medicine Hat Musical Theatre executive.

Musical Theatre began in 1960 and is following a relatively new tradition by presenting a musical show each fall, but the tradition of "theatre" in Medicine Hat reaches back over 50 years. The Medicine Hat Operatic Society began in 1914 and they have

been followed by Civic Theatre, Hatterlands Childrens Theatre, our own Musical Theatre and most recently the College Drama Department, all dedicated to bringing entertainment to the people of Medicine Hat. We pay tribute at this time to the many people, past and present, who have been active in theatre for the enjoyment of the community.

R. D. SKIDMORE,
President.

Congratulations . . .

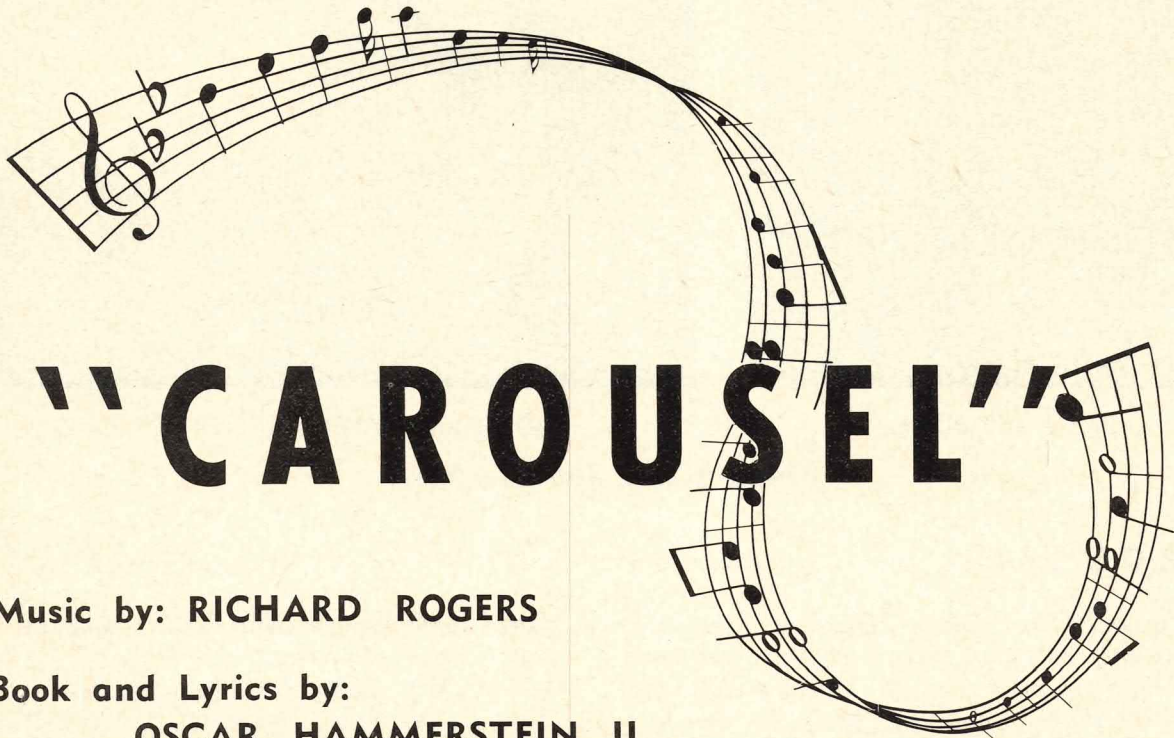
THE MEDICINE HAT SOCIETY OF PHARMACISTS

Aberdeen Pharmacy — Belsher Pharmacy Ltd. — Boylan's Drug Store Ltd. — Crescent Heights Rexall Drug Store — Duncan's Drug Store — Buchanan Drug Ltd. — MacKenzie Drug Co. Ltd. — MacKenzie Drug, Crestwood — Sept's Drug Store — Redcliff Drug Store.

Medicine Hat Musical Theatre

Presents

ROGERS & HAMMERSTEIN'S



"CAROUSEL"

Music by: RICHARD ROGERS

**Book and Lyrics by:
OSCAR HAMMERSTEIN II**

Based on Ferenc Molnar's "LILIOM" as adapted by Benjamin F. Glaset

MEDICINE HAT COLLEGE THEATRE

November 20th to November 25th, 1972

8:15 p.m.

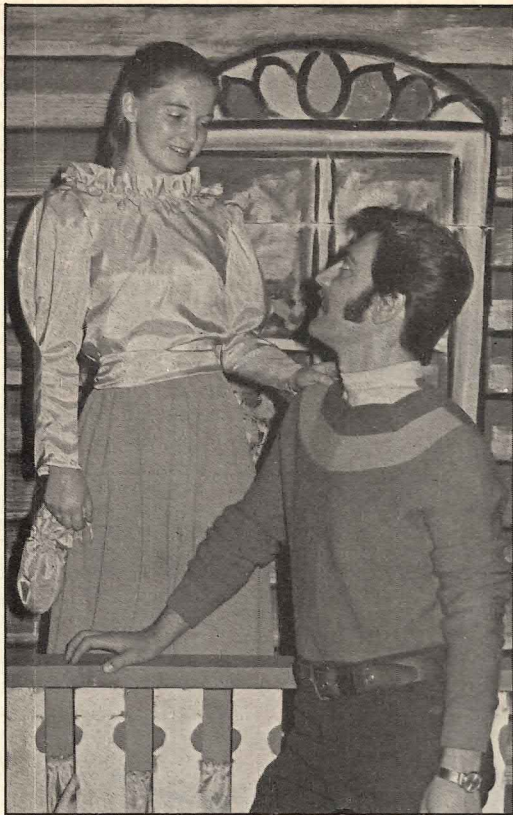
BOARD OF DIRECTORS

President - Mr. R. D. Skidmore	Corresponding Secretary - Mr. Ian MacDonald	
Vice-President - Mr. Bert Maltin	Treasurer - Mr. W. L. Townsend	
Past-President and Recording Secretary -	Mr. W. H. Hayne	
Miss Noreen Flanagan.	Mrs. Fred Hall.	Mrs. E. W. N. Macdonald
Mrs. Richard Orrell.	Mrs. A. T. Shand.	Dr. H. F. MacKenzie.

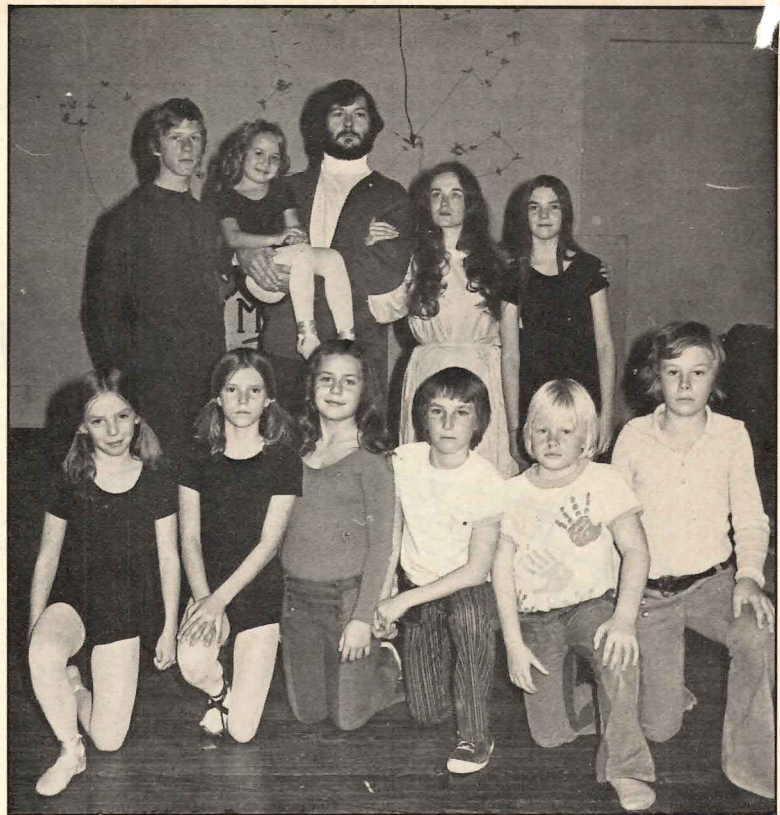
Cast Representative - Mrs. W. L. Townsend.

Honorary Directors - Mrs. Leo Lewis, Mr. Rod Ashburner

"CAROUSEL" is presented through special arrangement with Rogers & Hammerstein Library, 598 Madison Avenue, New York, N.Y. 10022.



BILLY and JULIE



ENOCH and CARRIE SNOW and 9 KIDS

Photos Courtesy of McCorkle Studios

CAROUSEL

"Carousel" has one of the most interesting backgrounds of any musical show. Its story stems from the play "Liliom" which was written by the Hungarian dramatist, Ferenc Molnar.

In 1921, the Theatre Guild brought a translated version of "Liliom" to the New York stage, with Eva Le Gallienne and Joseph Schildkraut in the starring roles. Then, a generation later, the Guild decided to transform "Liliom" into a musical combining the haunting quality of Molnar's story with the music of Richard Rodgers, the lyrics of Oscar Hammerstein II and the exciting choreography of Agnes de Mille.

The setting was changed from the Budapest suburbs to a small fishing village on the New England coast. The mood of the show became romantic, nostalgic and undeniably American in flavor. Thus "Carousel" was born — a musical with heart-tugging emotional appeal perfectly balanced by glowing lyrics, delightful tunes and intriguing ballet.

The story traces the life in this world, and the next, of the swaggering, boastful, carnival barker, Billy Bigelow, and his love for Julie, the

Synopsis of the play

gentle hearted girl who falls under his spell. Shortly after their marriage Billy loses his job and starts to bully Julie. Then he learns that he is to be a father. Desperate for money, he is induced to take part in a hold-up, which almost results in a murder. To avoid capture, Billy commits suicide.

We next see Billy at the Back Gate to Heaven, where he is told by Starkeeper, that he can redeem his soul by doing one good deed. To accomplish this, Billy is allowed to return to earth, where fifteen years have passed. There he finds his unhappy daughter, Louise, and offers her a star, which she refuses. Frustrated, he strikes her. It is through the philosophy and kindly understanding of the country doctor (who strongly resembles the Starkeeper) that Billie's mission is finally accomplished: Julie and Louise have found peace and strength.

In "Carousel" the teamed genius of Rodgers and Hammerstein produced a show that is an unforgettable theatre experience. From the catchy "June is Bustin' Out All Over", to Julie's plaintive "What's the Use of Wonderin'" — their songs go straight to the heart.

Cast of Characters

(In Order of Appearance)

CARRIE PIPPERIDGE	Susan Bray	YOUNG MISS SNOW	Lynda Grimm
JULIE JORDAN	Kim Baker	OTHER SNOW CHILDREN	Maureen, Michelle, Douglas Grimm, Carolyn and Susan Munroe, David and Dean Wenzel
MRS. MULLIN	Muriel Weiss	PRINCIPAL	Norm Bruins
BILLY BIGELOW	Otto Bernhardt	DR. SELDON	Lorne Havard
EUROPEAN BEAUTIES	Lilah Head Deen Hamilton		
STRONG MAN	Arnie Kanewischer	CHORUS - FEMALE: Kathy Eaton, Anne Ballantyne, Gloria Greenstein, Cindy Spackman, Noreen Flana- gan, Betty Butler, Heather Bellamy, Eleanor Town- send, Mary Krassman, Elaine Ramm, Betty Park, Glenda Huckle, Jeannette Waldie, Debbie Custer- son, Glenys Parker, Vicky Krassman, Patti Rae, Patti Kessler, Jayne Kerr, Brenda Bischoff, Eva Weiler, Evan Tonin.	
CLOWN	Rod Ashburner	CHORUS - MALE: Arnold Kanewischer, Manuel Esteban, Boris Horvath, Johannes Van Dam, Russell Jacober, Ian C. MacDonald, Bill Coleman, Larry Switzer, Gerald Weisschadel, Wayne Spackman, Palmer Huckle, Otto Bernhardt, Lorne Havard, Tony Bernhardt, Danny Hall, Allan Krassman, Rod Ashburner.	
1st POLICEMAN	Bill Coleman		
DAVID BASCOMBE	Ian Macdonald		
MRS. BASCOMBE	Noreen Flanagan		
BASCOMBE CHILDREN	Dale Komanchuk Martha Komanchuk		
NETTIE FOWLER	Carol Munroe		
ENOCH SNOW	Wayne Spackman		
JIGGER CRAIGIN	Palmer Huckle		
BOATSWAIN	Larry Switzer		
ARMINY	Brenda Bischoff		
2nd POLICEMAN	Larry Switzer		
BROTHER JOSHUA	Rod Ashburner		
(The Heavenly Friend)			
STARKEEPER	Lorne Havard		
LOUISE	Rhoda Heeg		
CARNIVAL BOY	Tony Bernhardt		
ENOCH SNOW JR.	Danny Hall		
		DANCERS: Jeannette Waldie, Debbie Custeron, Vicki Krassman, Patti Rae, Jayne Kerr, Patti Kess- ler, Cindy Biddell, Terry Biddell, Kathy Ziebart, Sharon Muskovitch, Larry Switzer, Boris Horvath, Gerald Weisschadel, Tony Bernhardt, Danny Hall, Alan Krassman.	

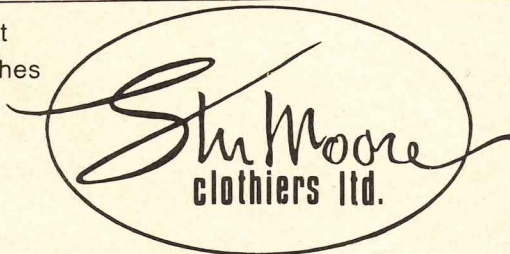
Bouquets to "Carousel" . . .

The Rosery & Harward's Florists

ON SECOND STREET

MEDICINE HAT, ALBERTA

Best
Wishes



"The Shop of Quiet Elegance"

560 SECOND ST. S.E. - PHONE 527-6969
MEDICINE HAT, ALBERTA

Best Wishes for Success to

Medicine Hat Musical Theatre and Cast



- MEDICINE HAT BRICK AND TILE
BRICK DIVISION
- MEDICINE HAT BRICK AND TILE
PIPE DIVISION
- NORTHWEST BRICK AND TILE
- REDCLIFF PRESSED BRICK
- WESTERN CLAY PRODUCTS
- RED RIVER BRICK AND TILE
- NATIONAL PORCELAIN

DIVISION OF I-XL INDUSTRIES LTD.



Best wishes for another Great Production from . . .

TAYLOR'S IGA FOOD STORE

310 Division Avenue S.W.

Synopsis of Scenes

TIME: 1873-1888

ACT I

- SCENE 1. PRELUDE. An amusement Park on the New England coast. May.
- SCENE 2. A tree-lined path along the shore. A few minutes later.
- SCENE 3. Nettie Fowler's Spa on the ocean front. June.

INTERMISSION

ACT II

- SCENE 1. On an island across the bay. That night.
- SCENE 2. Mainland waterfront. An hour later.
- SCENE 3. Up there.
- SCENE 4. Down here. On a beach. Fifteen years later.
- SCENE 5. Outside Julie's cottage.
- SCENE 6. Outside a schoolhouse. Same day.

Good Wishes "For Another Great Production" from your

MEDICINE HAT INSURANCE AGENTS ASSOCIATION

Craven, Hall & Co. — Thomson Fisher Insurance Agency Ltd. — Mantz Custom Realty Ltd.
Anderson & DesHarnais Ltd. — All Risk Insurance — Cypress Insurance Agency Ltd.

TO A SUCCESSFUL PRESENTATION

YOUR LADIES' & CHILDREN'S WEAR ASSOCIATION

The Cinderella and Petite Shops — Havard's Boutique Helene'

Joy's Style Shop Ltd. — Raber Departmental Store — Lady Fair Fashions Ltd.

Musical Numbers

ACT I

SCENE ONE: PRELUDE

WALTZ SUITE: CAROUSEL

SCENE TWO

YOU'RE A QUEER ONE, JULIE JORDAN Carrie and Julie
WHEN I MARRY MISTER SNOW Carrie
IF I LOVED YOU Billy, Julie

SCENE THREE

JUNE IS BUSTIN' OUT ALL OVER Nettie, Carrie, Arminy and Ensemble
DANCE: June Girl and Dancing Ensemble
REPRISE: WHEN I MARRY MR. SNOW Carrie, Mr. Snow and Girls
WHEN THE CHILDREN ARE ASLEEP Mr. Snow and Carrie
BLOW HIGH, BLOW LOW Jigger, Billy and Male Chorus
DANCE: Hornpipe led by Boatswain and Hannah
SOLILOQUY Billy
FINALE — ACT 1.

INTERMISSION

ACT II

SCENE ONE

THIS WAS A REAL NICE CLAMBAKE Nettie, Julie, Carrie,
Arminy, Mr. Snow and Ensemble
STONECUTTERS Mr. Snow, Jigger and Ensemble
WHAT'S THE USE OF WOND'RIN Julie and Girls

SCENE TWO

YOU'LL NEVER WALK ALONE Nettie and Julie
THE HIGHEST JUDGE OF ALL Billy

SCENE THREE

BALLET Louise and Dancers

SCENE FOUR

MY LITTLE GIRL Billy
REPRISE: IF I LOVED YOU Billy

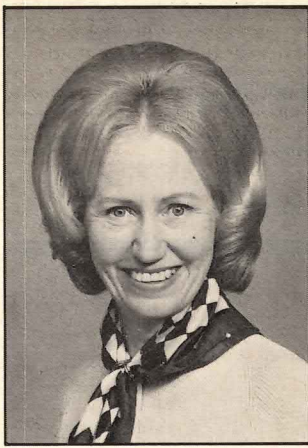
SCENE FIVE

GRADUATION SCENE: YOU'LL NEVER WALK ALONE Company

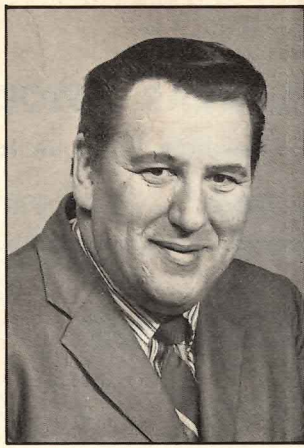
Compliments of . . .

Goodyear Tire and Rubber Company of Canada Limited

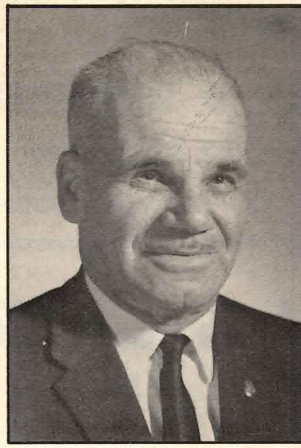
MEDICINE HAT PLANT



ADELE ARMSTRONG
Musical Director



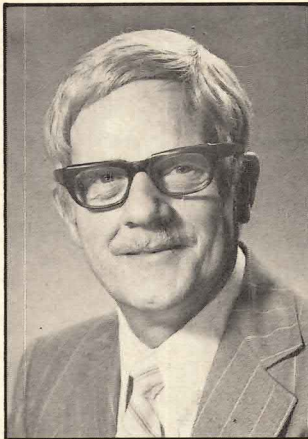
JOHN KOMANCHUCK
Director



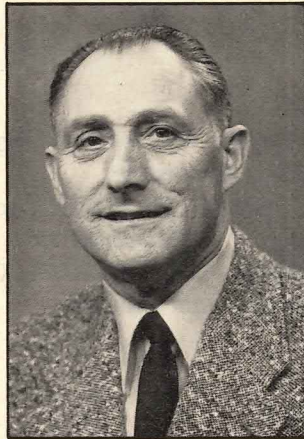
RON McAFFER
Producer



ELIZABETH FARRIS
Choreographer



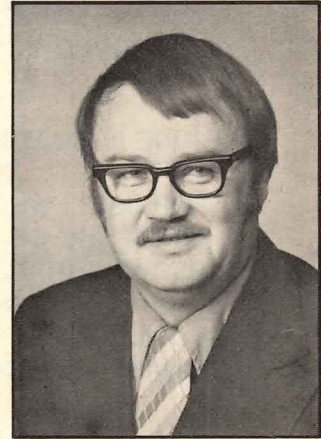
PALMER HUCKLE
Assistant Director



BRUNO SCHREIN
Light Designer



DONNA MacLEAN
Artistic Designer



NORM BRUINS
Stage Manager

Photos Courtesy of McCorkle Studios

TO ANOTHER MUSICAL "HIT"

MEDICINE HAT
moving
& STORAGE LTD.

MOVING WITH CARE EVERYWHERE

BEST WISHES

Marshall's Book Store Ltd.
621 - 2nd Street

and

Cypress Business Equipment
Medicine Hat, Alberta

CONGRATULATIONS

Blacks

The China People

BEST WISHES
"THE ALL NEW"

Hawthorne's
Mens Wear Ltd.

AND THE
"PACE PLACE"

640 - 3rd Street S.E.

PRODUCTION CREDITS

DIRECTOR JOHN A. KOMANCHUK
PRODUCER RON. McAFFER
MUSICAL DIRECTOR ADELE ARMSTRONG
ASSISTANT DIRECTOR PALMER HUCKLE
CHOREOGRAPHER ELIZABETH FARRIS
ARTISTIC DESIGNER DONNA MacLEAN
STAGE MANAGER NORM BRUINS

INSTRUMENTAL SCORE:

Piano I Adele Armstrong
Piano II Vicki Sedlacek
Hammond Organ Mabel Pedersen

LIGHT DESIGNER BRUNO SCHREIN

STAGING:

Ron McAffer, Mert McAffer, Frank Westgarth, Nora Gunter, Randy Bray, Bill Gruzman, Bob Rose, Gordie Baumbach, Gid Baumbach.

COSTUMES:

Pat Collard, Billie MacDonald, Gladys Riddle.

PROPERTIES JANICE OLAND, DONNA STRATE

MAKE-UP:

Lee MacGregor, Peter Condon, Jean Van Wert, Pat Komanchuk.

SCRIPT DEEN HAMILTON

CALLS RON MILLER

ADVERTISING BERT MALTIN

PUBLICITY ROD ASHBURNER

PROGRAM MARION SHAND, WALLY HAYNE

TICKETS & BOX OFFICE NOREEN FLANAGAN
LARRY TOWNSEND

HOUSE HEATHER HALL

USHERS:

Members of the Daughters of Job Bethel, #5 and #11.

MEMBERSHIP DR. H. F. McKENZIE

ENTERTAINMENT IAN MacDONALD

PHOTOGRAPHS McCORKLE STUDIOS

ACKNOWLEDGEMENTS:

The Medicine Hat Musical Theatre wishes to thank the following businesses and organizations for their contributions to "Carousel" — CHAT Radio & T.V., The Medicine Hat News, Recreation Commission, Medicine Hat College, Medicine Hat Public Library, McCorkle Studios.

EVERY SUCCESS TO . . .
"CAROUSEL"

STONE FURS

"If You Don't Know Your Furs . . . Know Your Furrier"

Phone 526-3200

528 Second Street

Medicine Hat

Best Wishes . . .

FYKE'S MUSIC CENTRE

YAMAHA PIANOS and ORGANS
THOMAS ORGANS

A Full Line Of Musical Instruments
AND INSTRUCTION



EVERY SUCCESS TO "CAROUSEL"

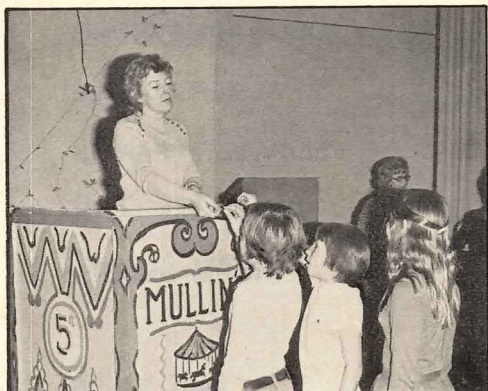
SAFeway STORES

THREE STORES TO SERVE YOU

DIVISION AVENUE
ON THE HILL

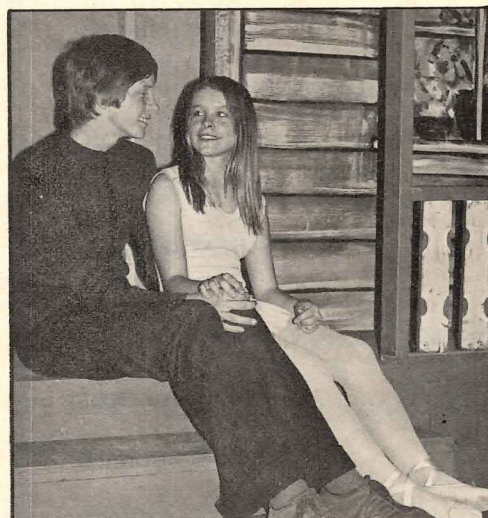
THIRD STREET
DOWNTOWN

EIGHTH STREET N.W.
CRESCENT HEIGHTS



MRS. MULLIN

STARKEEPER
and
HEAVENLY
FRIEND



ENOCH Jr.
and
LOUISE

EUROPEAN
BEAUTIES



Photos Courtesy of
McCorkle Studios

"CANADA'S FINEST WESTERN STORE"



MEDICINE HAT, ALBERTA

COMPLIMENTS TO THE CAST OF "72"

"CAROUSEL"



NORTHWEST
NITRO-CHEMICALS

A Credit To Medicine Hat

CONGRATULATIONS

RU-HAR SHOES

OTTO BERNHARDT — Prop.

'HIGH GRADE SHOES FOR LADIES & MEN'

539 THIRD STREET S.E.

Medicine Hat, Alberta

WISHING YOU EVERY SUCCESS . . .

**SILVERWOODS DAIRIES
LIMITED**

233 - 5th Street S.E.

Medicine Hat

BEST OF LUCK . . .

Beveridge's *Furniture Ltd.*

FURNITURE FASHION CENTRE

620 SECOND ST. S.E. — MEDICINE HAT, ALBERTA

HAT HARDWARE

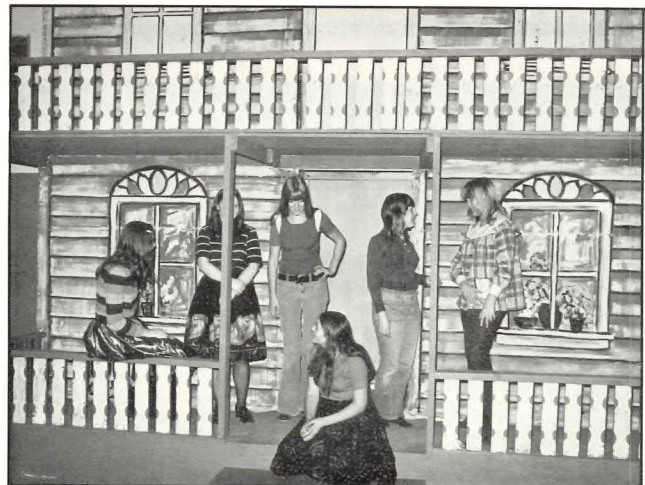
"THE STORE THAT DOES NOT
CHARGE INTEREST"

645 - 3rd Street S.E.

Medicine Hat



JIGGER and COMPANY



GIRLS AT NETTIE'S SPA

Photos Courtesy of McCorkle Studios

CONGRATULATIONS FROM . . .

The Park Lane Motor Hotel

7th Street and Red Deer Drive S.W.

Medicine Hat, Alberta

HERE'S TO ANOTHER HIT!

FLEMING'S MUSIC HOUSE

See Fleming's First for Musical Hits

"Musical theatre records available"

526 - 3rd St. S.E.

Medicine Hat

Congratulations . . .

EATON'S

MEDICINE HAT, ALBERTA

Wishing You Every Success . . .

SIMPSONS - SEARS

CATALOGUE SALES OFFICE

MEDICINE HAT, ALBERTA

GREETINGS FROM

THE HOUSE OF HOSPITALITY

The
ASSINIBOIA Inn

"NOW FULLY LICENSED"

Medicine Hat, Alberta



JUNE IS BUSTING OUT ALL OVER
THE COMPANY



TO YOUR SUCCESSFUL
PRODUCTION of

"CAROUSEL"

MEDICINE HAT'S NO. 1 SALESMAN

THE MEDICINE HAT NEWS

LITHO'D. BY VAL MARSHALL PRINTING (1969) LTD.