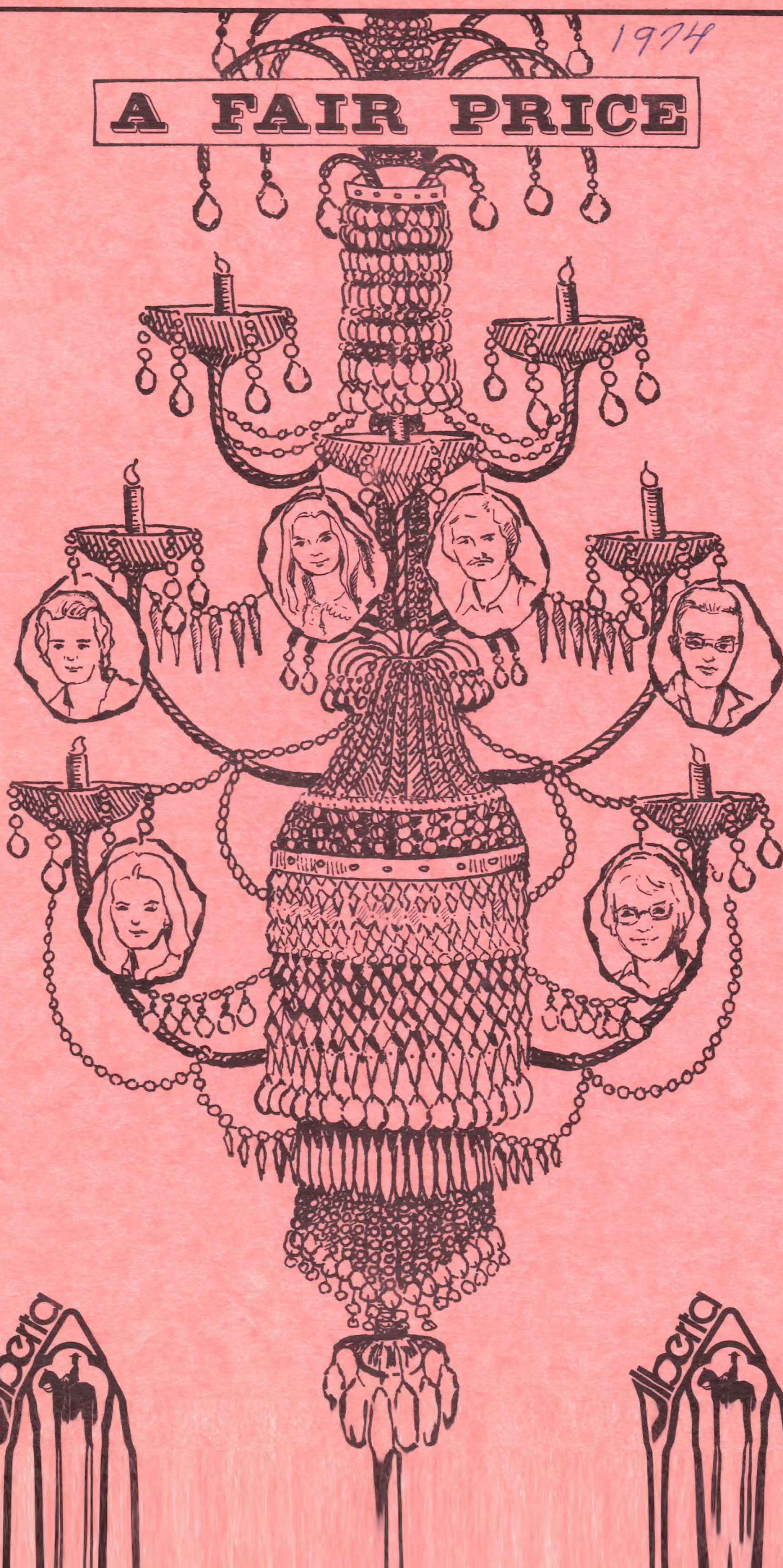
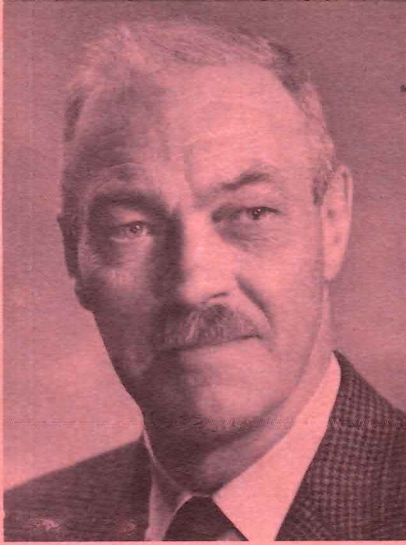


1974

A FAIR PRICE



A TRIBUTE

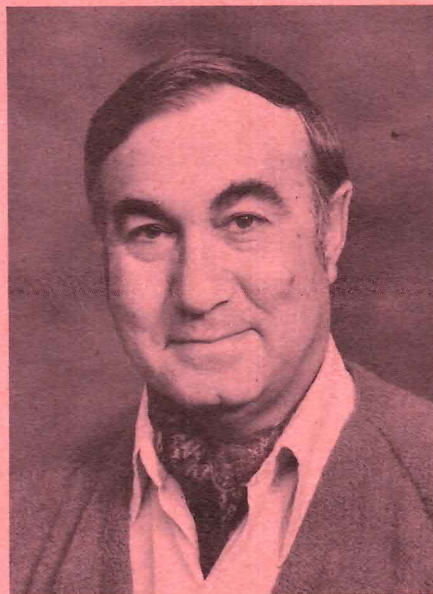


The late Roderick Edward Ashburner, fondly remembered as "Rod," was an enthusiastic lover of all the arts. His interest in drama and music began back in the earlier thirties, in the days of Little Theatre; later in Civic Theatre and on through the years to Medicine Hat Musical Theatre.

Quoting from Shakespeare: "All the world's a stage,
And all the men and women merely players.
They have their exits and their entrances;
And one man in his time plays many parts."

Rod played his parts.

PRESIDENT'S MESSAGE



For almost two years the planning of "A Fair Price," our original Musical, has taken much time on the part of your Musical Theatre Board of Directors. We owe a great deal to Ian MacDonald, who conceived the idea and has worked so diligently.

John Komanchuk has again proven his ability as a fine, imaginative director. We are indebted to our musical director, Alex Shand, for his dedication and talents.

Many thanks are extended to Dene Bristol and Gordon Nicholson, who originated the story, lyrics and music.

To the Musical Theatre directorate, the cast and all personnel connected with the Musical, your loyalty and cooperation will be remembered as one of the finest contributions in the history of Medicine Hat Musical Theatre

We thank the City of Medicine Hat for its assistance and the Alberta R.C.M.P. Centennial Committee for its very generous grant, which helped to make this production possible. We are again enjoying the excellent facilities and equipment available at Medicine Hat College.

It has been my honour and extreme pleasure to have served two consecutive years as president of Musical Theatre. The joy I have received from it, plus the many friends I have made, are reward enough for me.

In presenting this original Musical, we pay tribute to the pioneers of this area.

We thank you, the audience, for your continued patronage.

MEDICINE HAT MUSICAL THEATRE

PRESENTS

A FAIR PRICE

AN ORIGINAL MUSICAL

**MUSIC BY: G. Gordon Nicholson
Book and Lyrics by : Dene Bristol**

**Director: John Komanchuk
Music Director: Alex Shand
Medicine Hat College Theatre**

November 23rd & November 25th - 30th, 1974.

8:15 p.m.

President: Bert Maltin

Treasurer: Larry Townsend

Vice-President: Evan Tonin

Recording Secretary: Richard Skidmore

Corresponding Secretary: Ian MacDonald

Noreen Flanagan

Frank Riddle

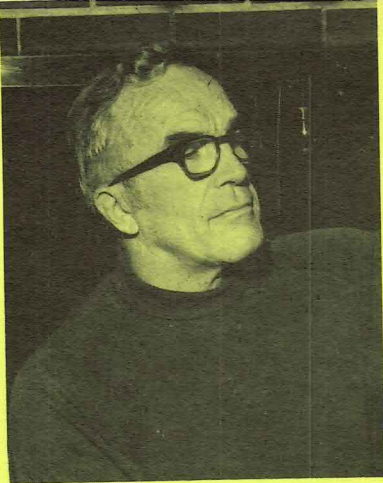
Ron Miller

Carol Munroe

John Dunlop

Dr. H.F. McKenzie

Cast Representative: Arnold Kanewischer



Ian C. MacDonald

A FAIR PRICE

ORIGINS OF THE MUSICAL

Medicine Hat Musical Theatre, in the spring of 1973, was conscious of the fact that the centennial of the Royal Canadian Police would be celebrated in 1973-74. Alberta's celebration would fall mainly in the latter year. Musical Theatre therefore sought a musical, for production in the fall of 1974, which would be suited to the occasion. The only one available

was "Rosemarie" but the directors thought it badly dated and unlikely to please today's audiences. On the suggestion of Ian MacDonald they decided therefore to commission an entirely new musical based on the history of the southern prairies in the period that brought the North West Mounted Police to the West.

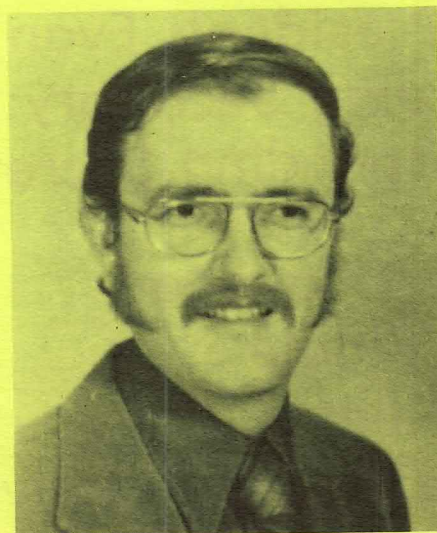
The search for a playwright and a composer or a person combining both talents consumed several months. In the fall of 1973 Musical Theatre commissioned Dene Bristol, then completing work for her master's degree in drama at the University of Alberta, to write the play and the lyrics, and G. Gordon Nicholson, a graduate of the same university and a teacher and musician in Edmonton, to write the music. In consultation with representatives of Musical Theatre, they completed that task during the ensuing year.

Mrs. Bristol is a graduate of Bristol University, England. In the fall of 1973 she won first prize for a three act play sponsored by the Alberta Department of Culture, Youth and Recreation. She now resides in Vancouver.

Mr. Nicholson, a native of Vegreville, is a graduate of Berklee College, Boston. He holds a master's degree in music and a Bachelor of Education from the University of Alberta. He teaches music at Grant MacEwan Community College in Edmonton.

The minimum budget for commissioning the musical and for copying and printing the script and score was estimated at \$6,000, the maximum budget at \$8,500. Musical Theatre applied both to the Department of Culture, Youth and Recreation and to the Alberta-RCMP Century Celebrations Committee for grants to help meet those costs. In the spring of 1974 it received a grant of \$6,000 from the Alberta-RCMP Committee, for which it is indeed grateful.

In the preparation of the musical, playwright and composer and theatre were assisted by many citizens of Medicine Hat and district. They include Mr. and Mrs. Robert Porter, Mr. Carl Hargrave, Mrs. Mary Bomford, Miss Helen Mitchell; Mr. Jack Barrie, director of the Medicine Hat Historical Museum; Commanding Officer, Canadian Forces Base Suffield. We are indebted to them.



CAST OF CHARACTERS

in order of appearance

| | |
|--------------------|----------------|
| Auctioneer | John Dunlop |
| Bert | Leslie Maltin |
| Margaret | Gail Kost |
| Joan | Darlene Lys |
| Edward Summerville | Ron Miller |
| Helen Summerville | Lillian Torrie |
| Billy | Ronnie Burkett |
| Frank | Palmer Huckle |
| Sgt. McIlree | Michael Dirk |
| Barry Armstrong | Kelly Handerek |
| Stan the Bartender | Lee Durkin |

CHORUS: Marion Shand (vocal coach), Sharon Clay, Eleanor Townsend, Bertie Mills, Betty Bond, Evan Tonin, Mary Ellen Lines, Janine Olszewski, Deidre Swan, Betty Butler, Kaye Gilchrist, Frank Butler, Ian MacDonald, Manuel Esteban, John Van Dam, Rick Assinger, Ken Spoonheim

CHORUS AND DANCER: Lilah Head, Deborah Custerson, Margaret Boardman, Irene Mackie, Marilyn Lough, Patty Torgerson, Sharon Johnson, Mary Smith, Carl Torgerson, Arnold Kanewischer, Bill Smith, Howard B. Jones, George Swain

SOLO BALLET: Terry Biddell

ORCHESTRA

CONDUCTOR AND MUSICAL DIRECTOR

Alex Shand

STRINGS: Carle Duguid, Carole Hoel, Frank Riddle, Clinton Sails, Andrea Ashton, Kathleen Hoel, Henry Van Der Sloom, Rod Harvey

REEDS: Larry Krantz, Judy Wudrich, Rita Judkins, David Olson, Rod Schmidek

TRUMPETS: Orville Kope, Al Soklofske, Floris Bouman

TROMBONES: Ralph Palmer, Fred Verhaest, W. Cledwyn Jones

FRENCH HORNS: Janet Oxman, Valerie Bishop

GUITARS: William Frank, Wayne Renke

PERCUSSION: Patrick O'Neill, Elaine Strand

PIANO: Donna Shand

REHEARSAL PIANISTS: Marion Shand, Dorothy Olmstead

MUSIC ASSISTANT: Brenda Shand

SYNOPSIS OF SCENES

The Place - On the Summerville ranch in the Medicine Hat area 1892 where the household effects of the Summerville family are being auctioned off to the highest bidder. Through a series of flashbacks, we go back to 1877 to England where the Summerville story begins.

ACT 1

- The Auction - Summerville Ranch 1892
- The Ballroom - Summerville Estate, England 1877
- The Ballroom - Later the same evening.
- The Panic - Summerville Estate 1878
- Arrival in Medicine Hat 1879
- The Ranch - Medicine Hat 1883
- The Bar 1883
- The Sod Hut 1883
- Back to the Auction - 1892

INTERMISSION — 15 MINUTES

ACT 11

- The Party - The New House 1889
- The Front Porch - later the same evening
- The Living Room - still later
- The Storm - Two years later 1891
- Back to the Auction - Summerville Ranch 1892

The Summervilles are auctioning their household effects. They include many bargains, the Auctioneer tells the audience. "A fair price" is all he's asking for these memories and dreams; and his philosophy is that one must pay a fair price for everything: Nothing is free. Thus we are carried swiftly back to the 1870's in England.

There, attended by many servants, the Summervilles live in the lap of luxury. But disaster threatens. The market is falling. Their mining company is failing. They may lose everything; and they do. So they emigrate to the big-sky country of the western prairies and turn to ranching.

English gentry who have lived in luxury find ranching on the prairies a tough game. They manage the transition from life in a stately mansion to a sod hut but the change is costly. Billy, the only son, becomes a despondent alcoholic. Mother Helen finds the strain almost too much to bear. The years bring tragedy. Only Joan, a teenager when the family leaves England, finds the prairie a place of overpowering beauty for all its extremes of climate. Her love of a new land, her adventurous spirit sustain her throughout the years of toil on the range.

When Edward and Helen decide finally to give up the ranching life and return to their beloved England, Joan chooses to remain and her sister, Margaret, decides to stay with her.

MUSICAL NUMBERS

ACT ONE

OVERTURE

1. "A Fair Price" - Auctioneer and Men's Chorus
2. "All in a Moment" - Auctioneer and Men's Chorus
3. "Chandelier Waltz" - Orchestra
4. "Work, Work, Work" - Chorus
5. "A New Life" - Duet - Helen and Joan
6. "To Be A Rancher" - Orchestra and Edward
7. "When Nothing Seems Worthwhile" - Billy
8. "The Prairie" - Joan
9. "Advertisement" - Auctioneer
10. "A Fair Price" - Reprise - Men's Chorus

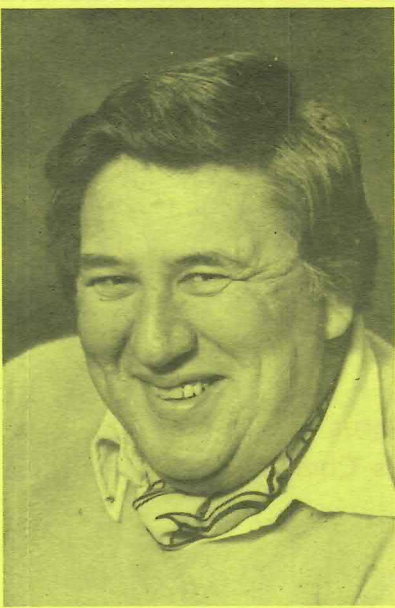
ACT TWO

11. "The Arrival Minuet" - Joan, Margaret and Chorus
12. Orchestra - Dance - Reel
13. "Free to Love" - Joan and Barry
14. "Memories" - Helen
15. "The Prairie" - Reprise - Auctioneer
17. "Tell Them A Story" - Auctioneer and Men
18. "Finale" - All

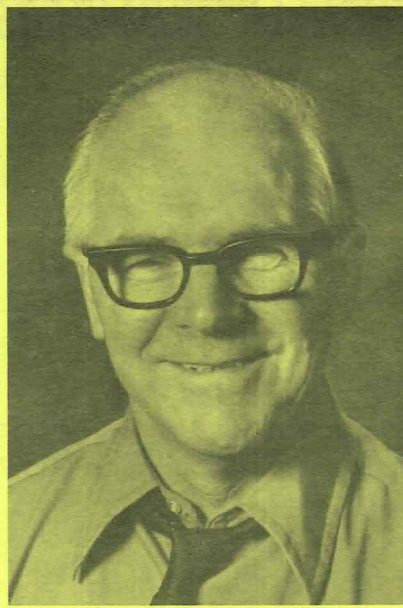
ACKNOWLEDGMENTS

1. Southview I.G.A.
2. CHAT Radio and T.V.
3. Medicine Hat Moving and Storage
4. Medicine Hat Public Library
5. Shamrock Bottling
6. Medicine Hat Historical Museum
7. McCorkle Studios
8. Medicine Hat News
9. Prairie Rattler
10. Frank Webber - News Photographer
11. Medicine Hat College
12. Medicine Hat School District #76
13. NU - Tone Cleaners
14. Hatterland Theatre
15. Woolworth's

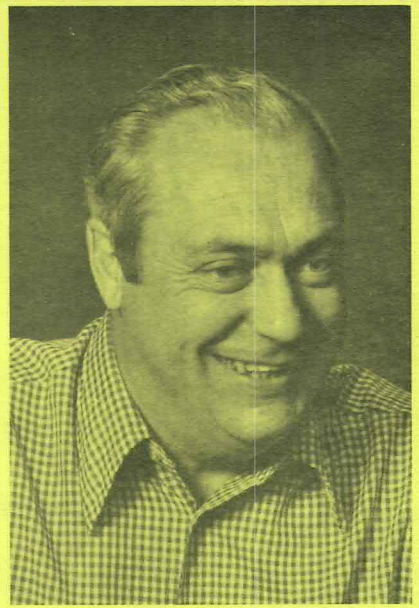
The Medicine Hat Musical Theatre gratefully acknowledge the sponsorship of the above advertisers as well as all those who have helped in any way to make this production possible.



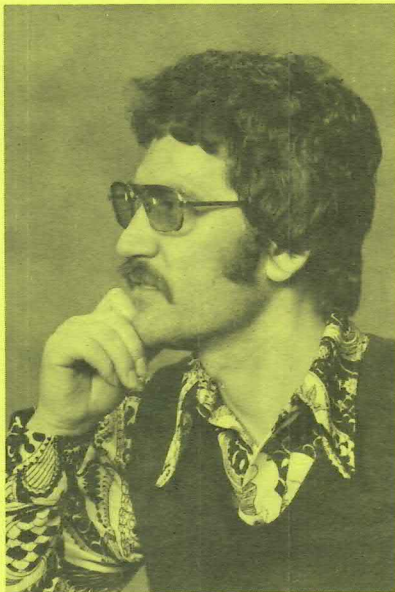
JOHN KOMANCHUK



ALEX SHAND



REG. KILLAM



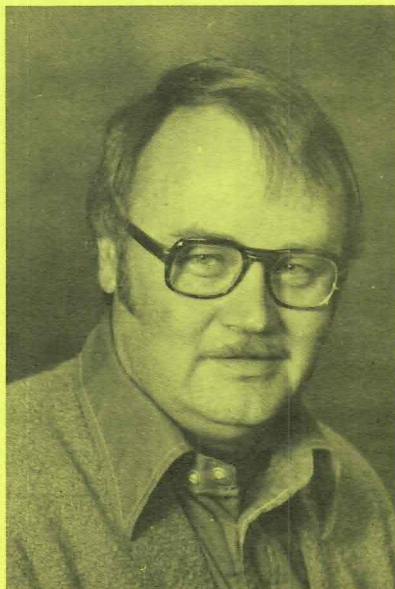
OTTO BERNHARDT



MURIEL WEISS



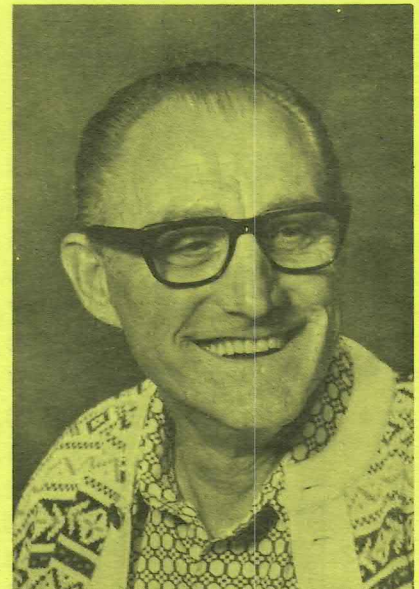
JOANNE NEEDHAM



NORM BRUINS



ROSSIS



BRUNO SCHREIN

PRODUCTION CREDITS

| | |
|-------------------------------|-----------------------------------|
| Director | John Komanchuk |
| Musical Director | Alex Shand |
| Producer | Reg Killam |
| Assistant Director | Otto Bernhardt |
| Assistant Producer | Muriel Weiss |
| Set Designer | Joanne Needham |
| Assistant Stage Manager | Norm Bruins Ron McAffer |
| Choreographers | Italo Rossi Georgette Y. Rossi |
| Light Designer | Bruno Schrein |

SETS:

DESIGNER: Joanne Needham assisted by Susan Bray, John Colburn, Sandra Craven, Lynne Druery, Donna Kanewischer, Colleen Little, Merle McCallum, Dorothy McGee, Sally Naismith, Susan Oland, Jean Van Wert, Frank Westgarth.

SET FURNITURE: Les Becker, Ron McAffer, Joan Nelson, Dawn Knowles

SET CONSTRUCTION AND BACK STAGE CREW: Ron McAffer, Norm Bruins, Les Becker, Bill Gruzman

FLOWERS: Thelma Renner, The Rosery and Harward's Florist

COSTUMES: Billie MacDonald

SEAMSTRESSES AND DRESSERS:

Beth Findlay, Gladys Riddle, Gail MacDonald, Freda Haysom, Olga Heller, Ruth Skidmore, Bea Mihalcheon, Mickey Baisley, Kay McBain, Lee Mills, Kay Jones, Marilyn Warne, Mary Ellen Lines, Janine Olszewski

PROPERTIES: Kay McBain, Dorothy Killam

LIGHTING: Bruno Schrein, Bob Rose, Larry Elhert

SOUND EFFECTS: Elaine Ramm

PROMPTS: Deen Hamilton

CALLS: Gerald Schimpf

TICKET SALES: Noreen Flanagan

ADVERTISING: Richard Skidmore

PUBLICITY: Ron Miller, Frank Riddle

PROGRAM: Carol Munroe assisted by Donna MacLean, Dorothy Killam

HOUSE: Evan Tonin

USHERS: Medicine Hat Teen Tones Preceptor Laureate Chapter Beta Sigma Phi

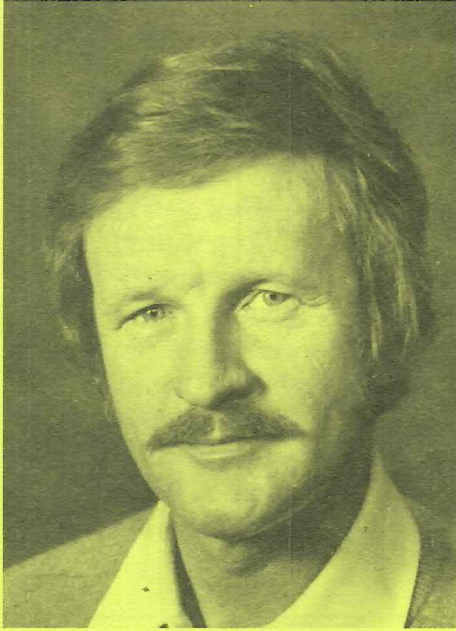
FINANCE: Larry Townsend

CAST ENTERTAINMENT: Dr. H.F.McKenzie

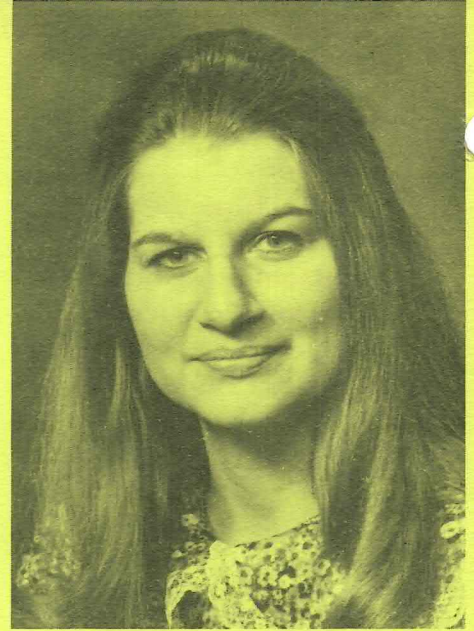
CAST CARDS: Arnold Kanewischer

PHOTOGRAPHS: McCorkle Studios

MAKE—UP: Manfred Sievert assisted by Eva Weiler, Joan Weiss, Peter Condon, Jean Altin,



JOHN DUNLOP



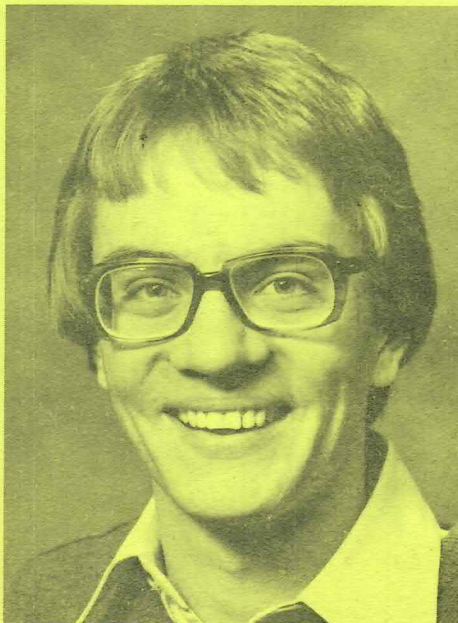
DARLENE LYS



LILLIAN TORRIE



RON MILLER



RONNIE BURKETT



GAIL KOST

*To The Audience,
Thank You
For Your Continued Support.*

Fyke's Music Center

531 3rd Street S.E., MEDICINE HAT

— Music Instruction —

Bus. 527-4288

Res. 527-4389

the rattler

Medicine Hat's Community Weekly
Serving Southeastern Alberta and Southwestern Saskatchewan

OPEN- 9.am-5.pm MONDAY-FRIDAY
524-2nd St S.E. 527-7165

EVERY SUCCESS TO "A FAIR PRICE"

STONE FURS

"If You Don't Know Your Furs...Know Your Furrier"

Phone 527-8200

528 Second Street

Medicine Hat

Ed's Studio Craft

Canadian & Imported Arts

635 - 3rd St. S.E.

Medicine Hat, Alberta

The **Assiniboia Inn**

VISIT OUR NEW "GROTTO ROOM"

The House of Hospitality
Medicine Hat, Alta.

"CONGRATULATIONS"

TO MEDICINE HAT MUSICAL THEATRE
ON YOUR ORIGINAL PRODUCTION

MODERN PRESS

2nd St. Downtown

Beveridge's Furniture Ltd.

Furniture Fashion Centre

HAT SALVAGE & Steel Ltd.

MR. B. DORCHIK

1248 S. Railway St. S.E. Medicine Hat, Alberta

OFFICE 527-1860

527-3800

MARSHALL'S BOOK STORE LTD. **CYPRESS BUSINESS EQUIPMENT**

621 Second St. S.E.

527-6696

MEDICINE HAT

939 Seventh Ave. S.E.

527-2151

BEST WISHES

For a Success in Your Original Production

"A FAIR PRICE"

TREASURY BRANCHES

The **Ming Tree**

"Nightly

Entertainment"

Fully Licensed Dining Lounge
& Lounge

FOR RESERVATIONS CALL 527-3334 527-3335

Capital GLASS LTD.

MEDICINE HAT - BROOKS - SWIFT CURRENT

ENJOY

THE MUSICAL THEATRE PRODUCTION

"A FAIR PRICE"

COMPLIMENTS OF

EATON'S Medicine Hat



MEDICINE HAT, ALBERTA

CANADA'S
FINEST
WESTERN
STORE

GREEN'S SHOES 615-3rd St. S.E.

GREEN'S MEN'S SHOES 626-3rd St. S.E.

DISCO SHOES No. 3 216 S. Railway St.

Goodyear

Tire and Rubber Co. of Canada Ltd.
Medicine Hat Plant

SUCCESS TO YOUR NEW VENTURE

A & B STEEL AND ALUMINUM LTD.

WHOLESALE DISTRIBUTORS

Bert Maltin Allan Freedman

"Congratulations on a Great Musical"

MAPLE LEAF MILLS LTD.

"COMPLIMENTS"

The **NEWS**



MEDICINE HAT

THE HAT HARDWARE

645-3rd Street S.E.
Medicine Hat, Alberta

"CONGRATULATIONS"

MEDICINE HAT

PIANO AND ORGAN CENTRE

Towne Theatre Building

FRANK GODLEY

SOUTHVIEW



SOUTHVIEW
MALL

"Best Wishes"

KITCHENIQUE

Southview Mall

George's

WE WISH YOU EVERY SUCCESS

FREDDIE'S PAINT (Western) LTD.

310 A DIV. AVE. S. W. MEDICINE HAT, ALTA.
Phone 526-6712

*Continued Success to the
MEDICINE HAT MUSICAL THEATRE*

*From
the MEDICINE HAT
SOCIETY OF PHARMACISTS*

Sears

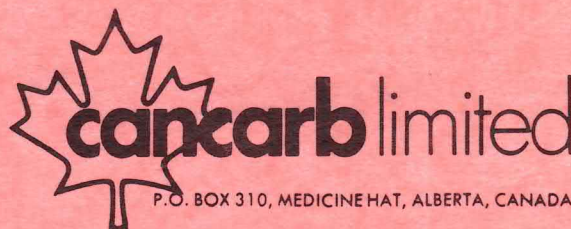
Medicine Hat, Alberta
Catalogue Sales Office

MUSICAL THEATRE

One of the nice things about living in Medicine Hat



REDCLIFF PRESSED BRICK DIVISION
MEDICINE HAT BRICK DIVISION
MEDICINE HAT PIPE DIVISION



P.O. BOX 310, MEDICINE HAT, ALBERTA, CANADA

THE OGILVIE FLOUR MILLS CO. LTD.

"CONTINUED SUCCESS"

The Throne Room

Bathroom Boutique

Southview Mall

Phone 527-7076

FLEMING'S MUSIC HOUSE

See Fleming's First for Musical Hits

526 - 3rd St. S.E.

Medicine Hat

Many Thanks