

1975

Sweet Charity



GOODYEAR

CANADA INC.

MEDICINE HAT PLANT

*BEST WISHES FOR
ANOTHER GREAT PRODUCTION*

BEST WISHES

GAFFNEY, HENCHEL ADJUSTERS LTD.



INSURANCE ADJUSTERS & APPRAISERS

413 - 6th Ave., S.E., Medicine Hat



EVAN TONIN

Good Evening...

The Board of Directors of Medicine Hat Musical Theatre welcomes you to "Sweet Charity", our fourteenth production, under the very capable direction of E.W.N. "Skip" Macdonald.

Although this is a musical that is not familiar to most of you, we know that after tonight's performance, you will never forget it. "Sweet Charity" is highly entertaining, and that is what Musical Theatre is all about.

On behalf of the Board of Directors may I express a sincere "thank you" to Skip Macdonald, the entire production crew, cast, musicians and numerous others who have given so freely of their time and talents. We appreciate the contribution made by each and every one of you.

To you, our audience, we thank you for your patronage and solicit your continued support of Musical Theatre.

And now "curtain up, light the lights", sit back and enjoy yourselves, and when you do - show it. This is the only reward that anyone associated with the show receives.

Evan Tonin,
President.

MUSICAL THEATRE

*One of the nice things about living in
Medicine Hat*



REDCLIFF PRESSED BRICK DIVISION
MEDICINE HAT BRICK DIVISION
MEDICINE HAT PIPE DIVISION



The **NEWS** MEDICINE HAT

*WISHING YOU
EVERY SUCCESS*

MEDICINE HAT MUSICAL THEATRE

presents

JEAN VAN WERT

as

Sweet Charity

A New Musical Comedy

Based upon an original screenplay by

FEDERICO FELLINI - TULLIO PINELLI - ENNIO FLAIANO

Book by NEIL SIMON

Music by CY COLEMAN

Lyrics by DOROTHY FIELD

MEDICINE HAT COLLEGE THEATRE

November 20 - 22 and November 25 - 29, 1975 - 8:15 p.m.

"Sweet Charity" is presented through special arrangement

with TAMS-WITMARK Music Library Inc.,

757 - 3rd Avenue, New York 17, New York, U.S.A.

PRODUCED BY MEDICINE HAT MUSICAL THEATRE

BOARD OF DIRECTORS

President **EVAN TONIN**

Vice-President **JOHN DUNLOP**

Past President **BERT MALTIN**

DR. H. F. MCKENZIE

Recording Secretary **ELAINE RAMM**

Corresponding Secretary **IAN MACDONALD**

Treasurer **LARRY TOWNSEND**

DR. J. H. SNEDDEN

RON MILLER

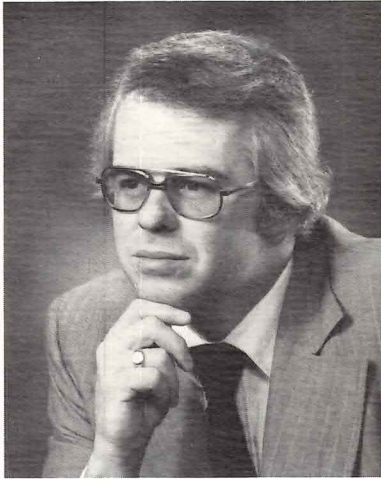
NOREEN FLANAGAN

FRANK RIDDLE

Cast Representative **ARNOLD KANEWISCHER**

Honorary Directors **BEA LEWIS, MARION SHAND**

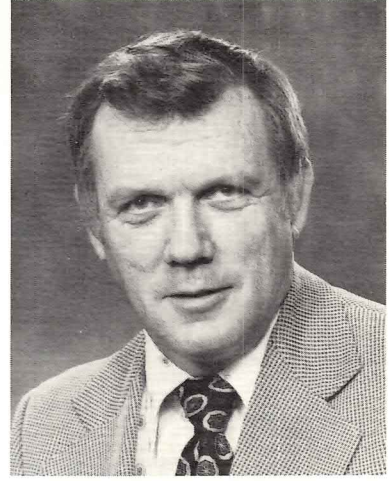
Life Member **WALLY HAYNE**



E. W. N. (SKIP) MACDONALD
Director



SARA STANLEY
Assistant Director



RAY BURKETT
Production Manager

Photos courtesy of McCorkle Studios

Sweet Charity

Synopsis of play

Sweet Charity is the story of Charity Hope Valentine, a girl who wanted to be loved. Featuring lively songs, beautiful dances and great humour, it takes one through a period in the 1960's and the loves of a dance hall hostess, with satirical pokes at cult religions, hippies, the rich and people in general. If there is any one message from the show it is that if a person can laugh, love and look to the future after adversity that, in the words of Helene, "you're gonna be all right".

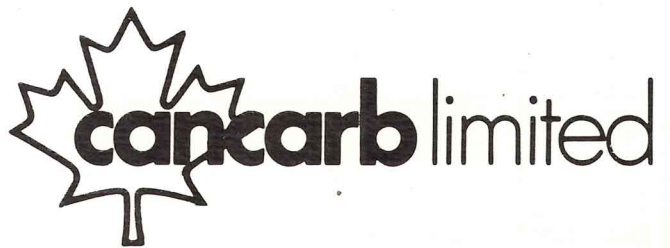
Fyke's Music Center

523 - 3rd Street S.E. Medicine Hat

Complete line of musical instruments
and stereo.

Bus. 527-4288

Res. 527-4389



P.O. BOX 310, MEDICINE HAT
ALBERTA, CANADA

CAST OF CHARACTERS

(in order of appearance)

Charity Jean Van Wert
Charlie Ron Miller
First Passerby Ken Bosch
Married Woman Bev de St. Croix
Married Man Arnold Kanewischer
First Young Man Bob Dennison
Woman With the Hat Muriel Weiss
Peanut Vendor Gilbert Munroe
Second Woman Lillian Torrie
Baseball Player Rick Link
Man With Dog John Van Dam
Spanish Young Man Fred Verhaest
Dirty Old Man Gerald Schimpf
First Cop John Yerbury
Second Cop Bill Pringle
Helene Deidre Swan
Nickie Susan Bray
Carmen Nancy Dill
Herman Ron Miller
Marvin Bill Pringle
Pan-Handlers Muriel Weiss,
Sharon Johnson,
Gilbert Munroe,
John Van Dam.
Doorman Grant Rombough
Ursala Michele Desharnais
Vidal Murray Rodgers
Waiter John Yerbury
Manfred Gerald Schimpf
Information Booth Girl Bev de St. Croix
Two Women in "Y" Lillian Torrie,
Sharon Johnson.

Oscar Don Runquist
Big Daddy Brubeck John Komanchuk
Brubeck's Assistants Muriel Weiss
Gerald Schimpf
Rosie Mary-Lyn Hopper
Barney Bill Pringle
Good Fairy Michele Desharnais
Signs Peter Condon

Dancers:

Teresa Murdoch, Ellie Braun,
Jennie Enright, Meg Seller,
Marilyn Lough, Sally Martin,
Nancy Dill, Sharon Heeg,
Bill Pringle, Fred Verhaest,
Rick Link.

Chorus:

Lillian Torrie, Michele Desharnais,
Laura Newman, Muriel Weiss,
Bev de St. Croix, Joyce Zablocki,
Marlene Foley, Sharon Johnson,
Mary-Lyn Hopper, John Yerbury,
Gilbert Munroe, Gerald Schimpf,
Grant Rombough, Bob Dennison,
Fred Verhaest, John Van Dam,
Rick Link, Arnold Kanewischer,
Peter Reimer, Ron Miller,
Murray Rodgers, Ken Bosch.

ORCHESTRA

Conductor: CARLE DUGUID

Violins Jacqueline Hoel, Carole Hoel,
Jim van der Sloot, Clinton Sails,
Erich Erdmann, Frank Riddle.
Cellos Henry van der Sloot, Alex Shand
Bass Mark Leiser
Piccolo Larry Krantz
Flute Marvin Gill, Larry Krantz
Oboe Marion Ali
Clarinet Larry Krantz, Ruth Krantz,
Marion Ali, Michael Falkenstein
Bass Clarinet Bruce Falkenstein
Bassoon Wayne Renke

Alto Saxophone Larry Krantz, Marvin Gill
Tenor Saxophone Marion Ali,
Michael Falkenstein
Baritone Saxophone Kevin Schimpf
Trumpets Robert McCullough,
Richard Condon
Trombones Keith Fisher, Cledwyn Jones,
Adolf Erdmann
Guitars William Frank, Wayne Renke
Percussion David Condon, Rod Hegland
Piano Kenneth Murdoch

MAPLE LEAF MILLS LTD.



PURITY FLOUR
MONARCH CAKE MIXES
TEA BISK

"CONTINUED SUCCESS"

SOUTHVIEW



SOUTHVIEW
MALL

BEST WISHES

SYNOPSIS OF SCENES AND MUSICAL NUMBERS

ACT I

Prologue - Charity's Wish

- Scene 1 The Park
"You Should See Yourself" Charity
"The Rescue" The Passers-By
- Scene 2 Hostess Room
- Scene 3 Fan-Dango Ballroom
"Big Spender" Nickie and Helene
and the Fan-Dango Girls
"Charity's Soliloquy" Charity
- Scene 4 New York Street
- Scene 5 Pompeii Club
"Rich Man's Frug" The Patrons
- Scene 6 Vittorio Vidal's Apartment
"If My Friends Could See Me Now" Charity
"Too Many Tomorrows" Vidal
- Scene 7 Hostess Room
"There's Gotta Be Something Better Than This" Nickie, Helene, Charity
- Scene 8 92nd Street "Y"
"I'm The Bravest Individual" Charity and Oscar

INTERMISSION
fifteen minutes

Coffee and soft drinks will be served in the cafeteria by Walter Huckvale
Chapter, I.O.D.E.



The Throne Room
BATHROOM BOUTIQUE

HERE'S TO ANOTHER HIT

SOUTHVIEW MALL
MEDICINE HAT, ALBERTA
T1D 1E2

Bus. 527-7076
Res. 526-2576

The
Assiniboia Inn

VISIT OUR NEW *"GROTTO ROOM"*

The House of Hospitality

Medicine Hat, Alberta

FLEMING'S MUSIC

See Fleming's First for Musical Hits

WISHING YOU EVERY SUCCESS

526 - 3rd St. S.E., Medicine Hat, Alberta

BBC & CBC BROADCASTS

FRANK GODLEY

Concert & Theatre Organist

-RECITALS-

Phone: 527-3745

SYNOPSIS OF SCENES AND MUSICAL NUMBERS

ACT II

- Scene 1 92nd Street "Y"
- Scene 2 Rhythm of Life Church
"Rhythm of Life" Big Daddy, Dancers and Chorus
- Scene 3 Going Cross-town
- Scene 4 Charity's Apartment
"Baby Dream Your Dream" Nickie and Helene
- Scene 5 Coney Island
"Sweet Charity" Charity and Oscar
- Scene 6 Fan-Dango Ballroom
- Scene 7 Times Square
"Where Am I Going" Charity
- Scene 8 Barney's Chile Hacienda
- Scene 9 Times Square
"I'm A Brass Band" Charity, Dancers and Chorus
- Scene 10 Fan-Dango Ballroom
"I Love To Cry At Weddings" Herman and Chorus
- Scene 11 The Park

Capital GLASS
LTD

GLASS OF ALL TYPES

MEDICINE HAT - BROOKS - SWIFT CURRENT

BEST WISHES FROM

Levinson Music 1975

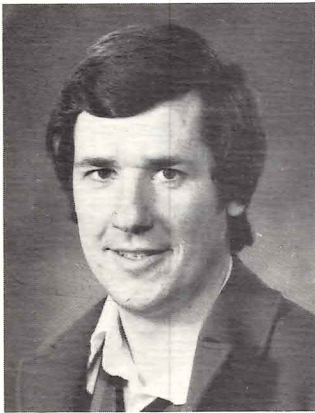


Where you can get everything
in Music

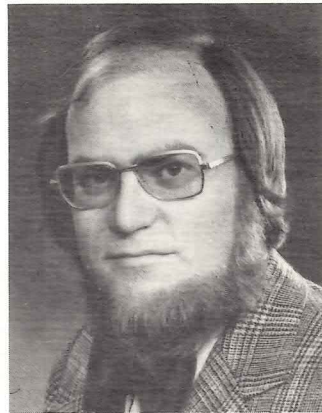
PHONE 526-2160

218 - SOUTH RAILWAY STREET

MEDICINE HAT, ALBERTA



KEN MURDOCH



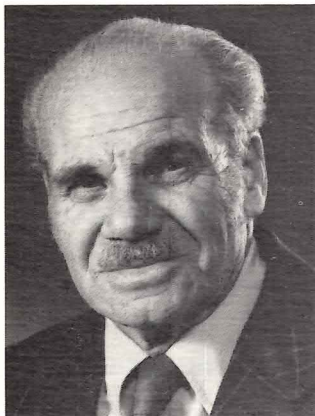
CARLE DUGUID



JOYCE CAMPBELL



JOANNE NEEDHAM



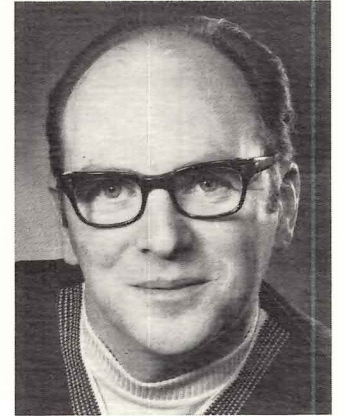
RON McAFFER



BETTY ANN YUILL

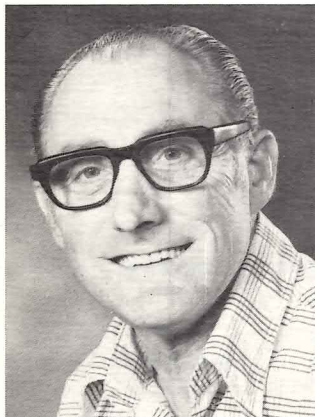


BETH WAMBOLT



MANFRED SIEVERT

Photos courtesy of McCorkle Studios



BRUNO SCHREIN

ENJOY
THE MUSICAL THEATRE PRODUCTION
"Sweet Charity"
 COMPLIMENTS OF
EATON'S MEDICINE HAT

MANY THANKS
To all the Advertisers



"CANADA'S FINEST WESTERN STORE"

Hutchings & Sharp
CLOTHING LTD.

MEDICINE HAT, ALBERTA

COMPLIMENTS OF....

**Canadian Imperial
Bank of Commerce**

2nd Street Branch 3rd Street Branch Crescent Heights Branch

PRODUCTION CREDITS

Director E.W.N. (Skip) Macdonald
 Assistant Director Sara Stanley
 Production Manager Ray Burkett
 Orchestra Conductor Carle Duguid
 Musical Director Ken Murdoch
 Choreographer Joyce Campbell
 Stage Manager Ron McAffer
 Set Designer Joanne Needham
 Set Construction and Stage Crew Joanne Needham, Ron McAffer

Assisted by Les Becker, Norm Bruins, Dan Bailey, Allen Bishop, Cheryl Moller, Christine Yerbury, George McAffer, Gid Baumbach, Len Freimark, Dorothy McGee, Marg Penrose, Susan Rissling, Merle McCallum, Claire Hart, Lyn Bruery, Jane MacKay

Lighting Bruno Schrein, Bob Rose
 Assisted by Brad Thickson,
 Dennis Bruckmann

Costumes Betty Ann Yuill
 Assisted by Eileen Sissons,
 Anne Bowen, Beth Anderson, Betty Parish,
 Gail Macdonald, Jane MacKay, Kay
 McBain, Linda Skene, Carol Snedden.
 Costumes for dancers supplied by
 MALABAR, LTD., Winnipeg

Make-up Manfred Sievert
 Assisted by Jean Altin
 Doris Evangelos, Margaret Phillips,
 Sara Stanley, Pat Verbrugge,
 Eva Weiler

Properties Beth Wambolt
 Assisted by Reg and Ruth Bolton

Script Eleanor Townsend

Calls Sandra Craven

Publicity Bert Maltin

Advertising John Dunlop

Program Ron Miller, Frank Riddle

Box Office Noreen Flanagan
 Larry Townsend

House Ian MacDonald
 Elaine Ramm

Ushers Teen Tones,
 Preceptor Laureate Chapter Beta Sigma Phi

Membership Arnold Kanewischer

Cast Entertainment Dr. H.F. McKenzie
 Dr. J.H. Snedden

Cover Design James Marshall
Choral Assistant Lillian Torrie
Photographs McCorkle Studios

Acknowledgements:

Medicine Hat College
 Medicine Hat Recreation Commission
 Medicine Hat School District # 76
 Medicine Hat Public Library
 Medicine Hat News
 CHAT Radio and T.V.
 Prairie Rattler
 McCorkle Studios
 Heights Barber Shop
 Shamrock Bottling
 Southview I.G.A.
 Levinson Music 1975
 Second Look Boutique
 Crestwood Texaco
 Nick's Pump Service
 Rosery Florists
 Alberta Government Telephones
 Westlander Inn
 Assiniboia Inn
 Silk-O-Lina
 Woolworth's
 Beveridge's
 Freddie's Paint (Western) Ltd.

Medicine Hat Musical Theatre gratefully acknowledges the support of the advertisers as well as the assistance and co-operation of all those who helped in making this production possible.

*Every success to
 "Sweet Charity"*

STONE FURS

"If You Don't Know Your Furs...Know Your Furrier"

Phone **527-8200**

528 Second Street

Medicine Hat

Beveridge's Furniture Ltd.
 Furniture Fashion Centre
 620 - Second Street S.E.
 Medicine Hat, Alberta

Ed's Studio Craft

Canadian & Imported Arts

635 - 3rd St. S.E.

Medicine Hat, Alberta

The Rosery Florist Ltd.

Bouquets to "Sweet Charity"



552 - 2nd Street S.E.

Medicine Hat, Alta.

526-3534



JEAN VAN WERT



DON RUNQUIST



SUSAN BRAY



DEIDRE SWAN

Photos courtesy of McCorkle Studios

the rattler

Medicine Hat's Community Weekly

SERVING SOUTHEASTERN ALBERTA
AND SOUTHWESTERN SASKATCHEWAN

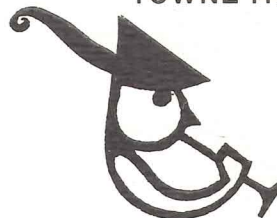
Open: 9 A.M. — 5 P.M. Monday - Friday

524 - 2nd Street S.E.

Phone 527-7165

MEDICINE HAT PIANO & ORGAN CENTRE

TOWNE THEATRE BUILDING



HAMMOND ORGANS
HEINTZMAN PIANOS

Tel: 527-0636

MEDICINE HAT SOCIETY OF PHARMACISTS

Aberdeen Pharmacy, Belsher Pharmacy,
Boylan Drugs #1, Boylan Drugs #2, Crescent
Heights Rexall Pharmacy, Duncan's Rexall
Drug Store, MacKenzie Drug Co. 1975 Ltd.,
Crestwood Pharmacy, Sept's Prescription
Drug Ltd.

EVERY SUCCESS TO "Sweet Charity"

"THE REAL PIZZA"
MEDICINE HAT'S NEWEST PIZZA HOUSE



110 SOUTH RAILWAY STREET

FREE DELIVERIES

Phone 527-6955

Best Wishes From

SAFeway

CANADA SAFEWAY LIMITED



Three Stores To Serve You

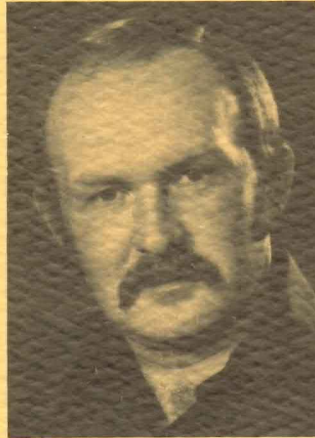
Division Avenue
On The Hill

Third Street
Downtown

Eighth Street N.W.
Crescent Heights



JOHN KOMANCHUK



MURRAY RODGERS



MICHELE DESHARNAIS



RON MILLER

Photos courtesy of McCorkle Studios

Good wishes for another great production
from your—

**MEDICINE HAT
INSURANCE AGENTS
ASSOCIATION**

Craven-Hall Insurance Agency, Thompson
Fisher Insurance Ltd., Cypress Agencies,
Anderson and DesHarnais Insurance Ltd.,
Sodero and Mantz Insurance Ltd.

GREEN'S SHOES

615-3rd St.S.E.

GREEN'S MEN'S SHOES

626-3rd St.S.E.

DISCO SHOES NO.3

216 S. Railway St.

FOR SERVICE STYLE AND SATISFACTION

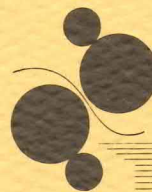


Canada Trust

*Best wishes
for a successful run.*

LES SMITH
Manager

Telephone 527-2222



the printer

IN THE LIGHT INDUSTRIAL AREA

More Music and Song....

What the world needs now

OGILVIE MILLS LTD.

"CONTINUED SUCCESS"

WE WISH YOU EVERY SUCCESS



FREDDIE'S PAINT
(Western) LTD.

310A DIV. AVE. S.W., MEDICINE HAT

Phone 526-6712

CARMEN THOMPSON GARY HOLLINGSHEAD



WHOLESALE INDUSTRIAL
& AGRICULTURAL
DISTRIBUTORS

**A&B STEEL AND
ALUMINUM LTD.**

"Congratulations on a Great Musical"

Phone 526-5927
Telex 038-4811

902 South Railway Street
Box 788 Medicine Hat

KITCHENIQUE

Southview Mall

Every success to "Sweet Charity"

George's

HOUSE OF DIAMONDS

The Ming Tree

Fully Licensed Dining Lounge
& Lounge

*"Nightly
Entertainment"*

FOR RESERVATIONS

CALL 527-3334 527-3335

HAT SALVAGE & STEEL LTD.



*Complete stock
of
new steel and pipe*

1248 S. Railway St. S.E.
Medicine Hat, Alberta

Bus. 527-3800
Res. 527-1860

BEST WISHES

*For a success in your
production "Sweet Charity"*

TREASURY BRANCHES

MARSHALL'S BOOK STORE LTD. CYPRESS BUSINESS EQUIPMENT

MEDICINE HAT

621 Second St. S.E.
527-6696

939 Seventh Ave. S.E.
527-2151