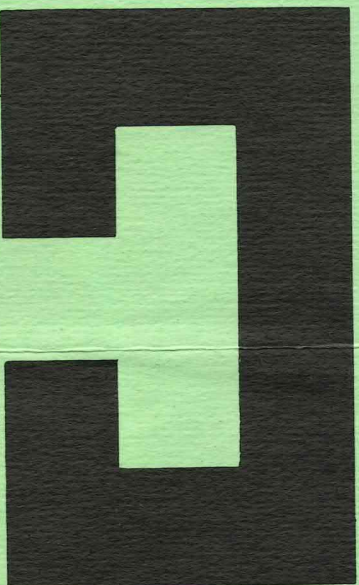


medicine hat musical theatre

Proudly Presents

WAWMIE





CANADA TRUST

Best Wishes
for a successful run

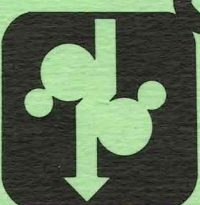
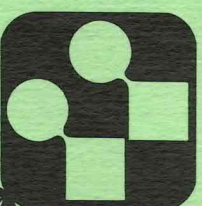
LES SMITH

Manager

Telephone 527-2222

WHEN YOU NEED
PRINTING . . .

of Any Kind,
We Are Ready
& Willing



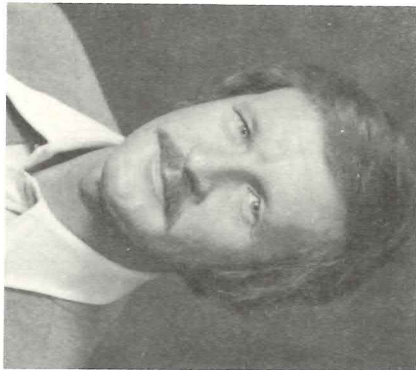
Tell Us What
You Want
We Will Show
You The Best
Value For Dollar
Method

CONSULT

**VAL MARSHALL
PRINTING (1969) LTD.**

DOWNTOWN ON SECOND STREET

"THERE'S NO BUSINESS LIKE SHOW BUSINESS"



This has been the motto of Medicine Hat Musical Theatre for the past 16 years, since its inception in 1960, and its first production of Oklahoma in 1961. Money was borrowed to put that show on the boards, and under the Presidency of Henry Allergoth the production was a financial success. Medicine Hat Musical Theatre has been self supporting since that time.

This success would not have been possible without the loyal support of theatre goers in Medicine Hat and area for the past 15 years, and

JOHN DUNLOP

on behalf of the Board of Medicine Hat Musical Theatre I sincerely thank you, and request your continued support in the future.

To repay the citizens of Medicine Hat for their support the Board has developed a scholarship program to aid and promote the advancement of young talent in the area. We have in the past, and will continue to offer scholarships to attend the Banff School of Fine Arts and Drama workshops in Drumheller and Olds, as well as giving scholarships at the annual Rotary Music Festival.

MUSICAL THEATRE

One of the nice things about living in Medicine Hat.



REDCLIFF PRESSED BRICK DIVISION
MEDICINE HAT BRICK DIVISION
MEDICINE HAT PIPE DIVISION

Thanks are also due to the Board members down through the years, the directors, actors, singers and dancers, musicians, stage managers, designers, and all the production crews including costume, properties and makeup, who have given freely of their time, talents and energies.

Richard Wells who now resides in Lethbridge was very active in promoting Musical Theatre in the City and directed the first three productions - Oklahoma 1961, Lil Abner 1961 and Palama Game 1962. Since then we have had many talented directors - Dorothy Jones, The Sound of Music 1964, Guys & Dolls 1965, Medicine Hat 1967, Oliver 1969, Adele Armstrong, Annie Get Your Gun 1966, John Komanchuk, Where's Charley 1968, Fiddler on the Roof 1971, Carousel 1972, A Fair Price 1974, and "Skip" Macdonald, Hello Dolly 1973, Sweet Charity 1975, and this year "Skip" again proves his talents in directing "Mame".

This year the executive has appointed Les Smith as Executive Producer, and his organizational talents combined with "Skip" MacDonald's artistic abilities have enabled them to put together a highly qualified production team, with Musical Director Marguerite Nering, Choreographer Joyce Campbell, Set Designer Isobel Sharp, and Stage Manager Ron McAffter.

Again let me thank you the audience for your support, and it is the hope of the Board of Medicine Hat Musical Theatre that you enjoy "Mame" as much as we have enjoyed preparing it for you.

John Dunlop
President

HERE'S TO A TERRIFIC PRODUCTION
FROM THE PRODUCERS AT

GRAVEN - HALL
REAL ESTATE LTD.

AND

CENTURY HOMES LTD.

MEDICINE HAT MUSICAL THEATRE

presents

MAME

- BOOK BY JEROME LAWRENCE & ROBERT E. LEE.
- MUSIC AND LYRICS BY JERRY HERMAN.
- BASED ON THE NOVEL BY PATRICK DENNIS, AND THE PLAY, AUNTIE MAME BY LAWRENCE AND LEE.
- BROADWAY PRODUCTION DANCE & MUSICAL NUMBERS STAGED BY ONNA WHITE AND DIRECTED BY GENE SAKS.
- PRODUCED FOR THE NEW YORK STAGE BY FRYER, CARR & HARRIS.

MEDICINE HAT COLLEGE THEATRE

NOV. 19 & 20 AND NOV. 23 TO 27, 1976 — 8:15 P.M.

Mame is presented through special arrangements with

Tams - Witmark Music Library Inc.

757 - 3rd Avenue, New York 17, New York, U.S.A.



LOCAL PRODUCTION BY

MEDICINE HAT MUSICAL THEATRE

BOARD OF DIRECTORS


- PRESIDENT - JOHN DUNLOP
- VICE PRESIDENT - NOREEN FLANAGAN
- PAST PRESIDENT - EVAN TONIN
- DIRECTORS — BERT MALTIN - DR. H. F. MCKENZIE - FRANK RIDDLE - DR. JACK SNEDDEN - ROBERT BLOCK.
- RECORDING SECRETARY - ELAINE RAMM
- CORRES. SECRETARY - IAN MACDONALD
- TREASURER - ELAINE TOWNSEND.
- DR. H. F. MCKENZIE - FRANK RIDDLE - DR. JACK SNEDDEN - ROBERT BLOCK.
- CAST REPRESENTATIVE — JIM VEENSTRA.
- HONORARY DIRECTOR — MARION SHAND.
- LIFE MEMBERS — WALLY HAYNE, BEA LEWIS.

KITCHENIQUE Southview Mall
 Every success to MAME
George's
 HOUSE OF DIAMONDS


The
NEWS
 MEDICINE HAT
 WISHING YOU EVERY SUCCESS

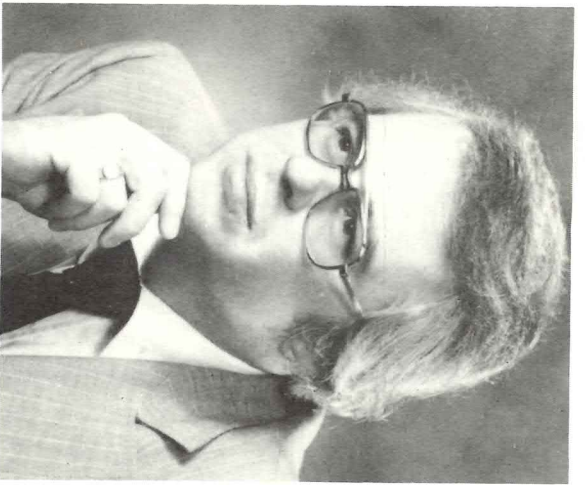


The Rosery Florist Ltd.
 Bouquets to MAME
 552 - 2nd Street S.E.
 Medicine Hat, Alta.
 526-3534



MEDICINE HAT PIANO & ORGAN CENTRE
 A WESTERN KEYBOARD STORE
 TOWNE THEATRE BUILDING
 HAMMOND ORGANS
 HEINTZMAN PIANOS
 Tel: 527-0636





E.W.N. "SKIP" MACDONALD
Artistic Director



LES SMITH
Executive Producer



SARA STANLEY
Assistant Director

PHOTOS COURTESY OF MCCORKLE STUDIOS

SYNOPSIS OF PLAY

"Mame" is a musical comedy based on the stage play "Auntie Mame". It is the story of the zany, fun loving, mad hatterish Mame Dennis, who suddenly has her ten year old nephew, Patrick, come to live with her permanently. The play covers an eighteen year period of their lives starting in 1928, showing many escapades of Mame including how she teaches Patrick her philosophies of life. The show opens explaining to all present this philosophy, and then moves through the tribulations with Babcock the Banker, who attempts to get Patrick educated "properly"; the trials of the Depression; the marriage of Mame; and the growing up of Patrick. Along the way you will meet Mame's best friend, Vera Charles, a rather faded musical theatre star, who nonetheless has not lost her sense of satire and humor; Agnes Gooch, who is remade and reborn; and Beauregard Jackson Pickett Burnside, who takes Mame to the deep south for the Title Song. All these people and the other characters who get involved along the way, together with the fine music, and the timely dances, make Mame one of the funniest, liveliest and best musicals ever to grace the stage.

NOTE: CAMERAS AND TAPE RECORDERS NOT PERMITTED IN THE THEATRE

DIRECTION AND PRODUCTION PERSONNEL



— MARGUERITE NERING



JOYCE CAMPBELL



RON MCAFFER



ISOBEL SHARP

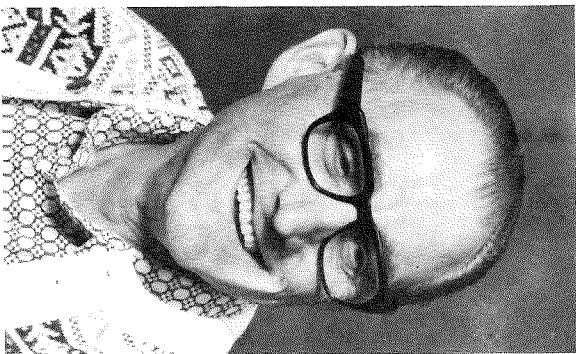
PHOTOS COURTESY OF MCCORKLE STUDIOS



DOROTHY KILLAM



CARLE DUGUID

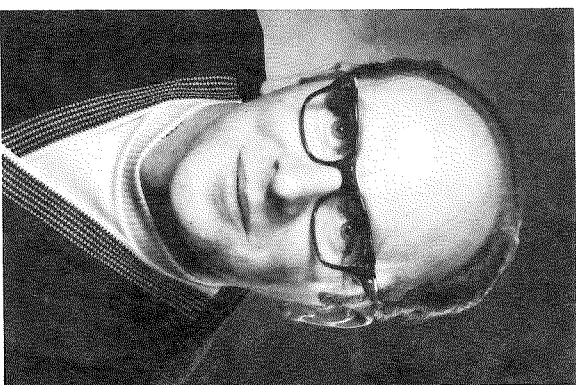


BRUNO SCHREIN

— 4 —



NORA HACKETT



MANFRED SIEVERT



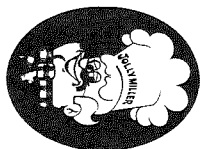
CARMEN THOMPSON GARY HOLLINGSHEAD

WHOLESALE INDUSTRIAL
& AGRICULTURAL
DISTRIBUTORS

"Congratulations on a Great Musical!"

Phone 526-5927
Telex 038-4811

902 South Railway Street
Box 788 Medicine Hat



MAPLE LEAF MILLS LTD.

PURITY FLOUR

MONARCH CAKE MIXES

TEA BISK

"CONTINUED SUCCESS"

Congratulations on another SMASH HIT!

From LESLIE MALTIN (Owner manager) and all the staff at the

MUNTZ SOUND CENTRE

650 - 3rd Street S.E.

BONUS OFFER: Bring this coupon with you and receive 10% discount on the LP Sound Track of MAME!



KAROLYN HARKER
AS MAME

Mrs. Harker is a graduate of Brigham University. She has a great deal of experience in dramatic, comedy and musical theatre, having played leads in the dramatic plays "The Diary of Anne Frank", "Time Remembered", "All My Sons", "The Crucible", "Camille", and "The Mousetrap." She also played Mrs. Mullins in the musical "Carousel" and played the role of **Mame** in the stage play "Auntie Mame" for which she was awarded Best Actress.



MURIEL WEISS
AS VERA CHARLES

Muriel Weiss will be remembered for her portrayal of Annie Oakley in "Annie Get Your Gun" and for other lead roles in "Fiddler on the Roof" and "Carousel." She has also been involved in choral and backstage roles in local musicals and in civic drama as well, and she has hosted three local T.V. shows relating to Senior Citizens and Teenagers.

The
Assiniboia Inn

VISIT OUR NEW **"GROTTO ROOM"**

The House of Hospitality
Medicine Hat, Alberta

MARSHALL'S BOOK STORE LTD.
TYMPRESS BUSINESS EQUIPMENT

MEDICINE HAT

621 Second St. S.E.
527-6896

939 Seventh Ave. S.E.
527-2151

The Petite Shop

"TOTS TO TWENTIES"

HEADQUARTERS FOR BABIES, CHILDREN
TEENS AND LADIES WEAR

535 - 3rd Street S.E.

Phone 526-4400

The Gyrene Room
BATHROOM BOUTIQUE

HERE'S TO ANOTHER HIT

SOUTHVIEW MALL
MEDICINE HAT, ALBERTA
T1D 1E2

Bus. 527-7076
Res. 526-2576



LILLIAN TORRIE
AS AGNES GOOCH



CHERYL DUNN
AS "YOUNG PATRICK"



JIM VEENSTRA
AS "OLD PATRICK"



MIKE ALLORE
AS "YOUNG PATRICK"



JERRY SCHIMPF
AS DWIGHT BABCOCK

Richardson's Jewellery Alberta Ltd.

SOUTHVIEW MALL



DIAMONDS AND WATCHES
RING AND WATCH REPAIR
GOLD JEWELLERY

MEDICINE HAT

PHONE 526-6784

GREEN'S SHOES

LADIES &
CHILDREN
615-3rd St. S.E.

GREEN'S MEN'S SHOES

626-3rd St. S.E.

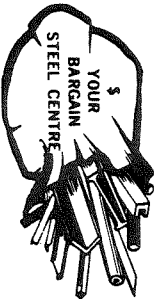
DISCO SHOES NO. 3

216 S. Railway St.

SHOP DOWNTOWN
WIN A CAR

FOR SERVICE STYLE AND SATISFACTION

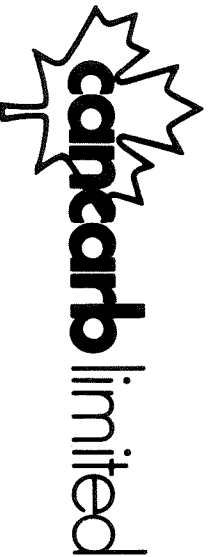
HAT SALVAGE & STEEL LTD.



Complete stock
of
new steel and pipe

1248 S. Railway St. S. E.
Medicine Hat, Alberta

Bus. 527-3800
Res. 527-1860



P.O. BOX 310, MEDICINE HAT
ALBERTA, CANADA

SOCIETY OF PHARMACISTS

MEDICINE HAT
Aberdeen Pharmacy, Belsher Pharmacy,
Boylan Drugs #1, Boylan Drugs #2, Crescent
Heights Rexall Pharmacy, Duncan's Rexall
Drug Store, Mackenzie Drug Co. 1975 Ltd.,
Crestwood Pharmacy, Sept's Prescription
Drug Ltd.

EVERY SUCCESS TO "NAME"

SYNOPSIS OF SCENES AND MUSICAL NUMBERS

ACT ONE

- Scene 1* Somewhere in New York, 1928
 "St. Bridget" Agnes
- Scene 2* Mame's Apartment, No. 3 Beekman Place
 "It's Today" Mame and chorus
- Scene 3* Hallway of Mame's Apartment
- Scene 4* Mame's Bedroom
- Scene 5* Mame's Apartment and all around New York
 "Open a New Window" Mame, Patrick,
 dancers and chorus
- Scene 6* Mame's Apartment
 "The Moon Song" Vera and chorus
- Scene 7* The Shubert Theatre - New Haven
 "My First Girl" Patrick and Mame
- Scene 8* Salon Pour Messieurs
- Scene 9* Mame's Apartment
 "We need a Little Christmas" Mame, Agnes,
 Patrick & Ito

Scene 10 Peckerwood

"Mame" Beau, chorus and dancers


INTERMISSION (*Fifteen Minutes*)

Coffee and soft drinks will be served in the cafeteria
 by Walter Huckvale Chapter, I.O.D.E.

ACT TWO

- Scene 1* Prep School, College and Singapore
- Scene 2* Mame's Apartment
 "Bosum Buddies" Mame and Vera
- Scene 3* Mame's Apartment (six months later)
 "Gooch's Song" Agnes
- Scene 4* The Upson Farm ("Upson Downs")
 "That's How Young I Feel" Mame and dancers
 "If He Walked Into My Life" Mame
- Scene 5* Mame's Apartment
- Scene 6* Mame's Apartment (1946)
 "Finale" Full Cast

BEST WISHES FROM
Levinson Music 1975
 Where you can get everything
 in Music



PHONE 526-2160
 218 - SOUTH RAILWAY STREET
 MEDICINE HAT, ALBERTA

INSURING YOU LOTS OF SUCCESS
THE LIFE UNDERWRITERS OF
MEDICINE HAT

| | |
|----------------------|------------------|
| Mutual Life | Canada Life |
| London Life | Traveler's Life |
| Sun Life of Canada | Accadia Life |
| Lutheran Brotherhood | Commercial Union |
| Prudential Life | Monarch Life |
| All State | C.I.S. Ltd. |

FLEMING'S MUSIC
 YOUR ONE-STOP RECORD STORE

Rock, Classical, Folk, Children's,
 Country and Western, International

WISHING YOU EVERY SUCCESS

528A - 3rd Street S.E., MEDICINE HAT

CAST OF CHARACTERS

(in order of appearance)

Patrick Dennis, age 10 Cheryl Dunn
 Mike Alliore
 Agnes Gooch Lillian Torrie
 Vera Charles Muriel Weiss
 Mame Dennis Karolyn Harker
 Ralph Devine Harry Lutz
 Bishop Rod Schlachter
 M. Lindsay Woolsey Bob Stone
 Ho Brian Quinn
 Doorman Lee Durkin
 Elevator Boy Brent Dennison
 Messenger Bob Dennison
 Dwight Babcock Gerald Schimplf
 Art Model Karen-Anne Crowley
 Dance Teacher Susan Eaton Bray
 Modern Dancers Janet Hagsisavas & Jim Veenstra
 Leading Man Ken Bosch
 Stage Manager Lee Durkin
 Madame Branislowski Sandra Craven
 Gregor Ron Miller
 Beauregard Jackson Pickett
 Burnside Murray Rogers
 Uncle Jeff Brent Dennison
 Cousin Fan Bev de St. Croix
 Sally Cato Maureen Lynn
 Mother Burnside Diane Skelton-Carr
 Patrick Dennis, age 19-29 Jim Veenstra

Junior Babcock Lee Durkin

Mrs. Upson Sandra Craven

Mr. Upson Ron Miller

Gloria Upson Patti Kessler

Pegeen Ryan Maureen Lynn

Peter Dennis Mike Alliore

Cheryl Dunn

Dancers

Jean Van Wert, Susan Eaton Bray, Maureen West, Karen-Anne Crowley, Kim Glass, Annette Drever, Janyl Bertram, Robyn Nering, Janet Hagsisavas, Dee Pickett, Del Pickett, Brian Quinn, Dale Verwoerd, Jim Veenstra, Bill Pringle, Patti Kessler.

Chorus

Ron Miller, Lee Durkin, Bob Stone, Murray Rogers, Brent Dennison, Rod Schlachter, Ken Bosch, Jim Nering, Neil Hoffman, Garry Bagshaw, Ian MacDonald, Harry Lutz, Jim Veenstra, Eleanor Townsend, Betty Bond, Marlene Foley, Bev de St. Croix, Joyce Zablocki, Sharon Quinn, Esther Miller, Ella R. Walker, Jean Van Wert, Susan Eaton Bray, Maureen West, Karen-Anne Crowley, Kinn Glass, Annette Drever, Janyl Bertram, Robin Nering, Dale Verwoerd, Diane Skelton-Carr, Maureen Lynn, Sandra Craven, Patti Kessler.

ORCHESTRA

Conductor: CARLE DUGUID*

Piano MARGUERITE NERING*
 Reeds LARRY KRANTZ*
 RUTH KRANTZ*
 MARION ALI
 Trumpets ROBERT McCULLOUGH
 LAUREN LEISER
 Trombone RALPH PALMER
 String Bass MARK LEISER
 Percussion JOHN BERTRAM

*PERFORMING WITH THE PERMISSION OF
 LOCAL 457, AMERICAN FEDERATION OF MUSICIANS

Tyke's Music Center

523 - 3rd Street S.E.

Medicine Hat

Complete line of musical instruments
 and stereo.

Bus. 527-4288

Res. 527-4389

BBC & CBC BROADCASTS

FRANK GODLEY

Concert & Theatre Organist

—RECI-TALS—

Phone: 527-3745

PRODUCTION CREDITS

LES SMITH - EXECUTIVE PRODUCER

ARTISTIC DIRECTOR SKIP MACDONALD
 ASSISTANT DIRECTOR SARA STANLEY
 MUSICAL DIRECTOR MARGUERITE NERING
 CHOREOGRAPHER JOYCE CAMPBELL
 STAGE MANAGER RON McAFFER
 SET DESIGNER ISABEL SHARP
 SET CONSTRUCTION, DECORATING, & BACKSTAGE CREW
 Les Becker, Don Bailey, Len Freimark, Ron Carr, Allan Bishop, Norm Bruins, Gig Baumback,
 Colleen Little, Joanne Needham, Joan Nelson, Penny Becker, Carol Durkin, Bob Grove, Stephen
 Hackett.
 LIGHTING Bruno Schrein, Bob Rose,
 Don Bailey
 COSTUMES Gail Macdonald, Bonnie
 Becker, Veronica Maitin, Rosanne Rowe,
 Beth Anderson, Betty Parrish.
 MAKE-UP Manfred Sievert
 Assisted by Jean Altin,
 Margaret Phillips, Gabriele Sievert, Doris
 Evangelos.
 PROPERTIES Dorothy Killam
 Assisted by Beth Warmboit
 SCRIPIT Deen Hamilton
 CALLS Eva Weller
 PUBLICITY & ADVERTISING Skip Macdonald
 Assisted by Beverly Bertram
 PROGRAM Frank Riddle, Les Smith
 Bert Maitin, Ron Miller
 BOX OFFICE Noreen Flanagan
 Assisted by Larry Townsend
 HOUSE Ian Macdonald
 Assisted by Elaine Ramm
 USHERS Drama Students - Crescent Heights
 Preceptor Laureate Chapter Beta Sigma Phi
 CAST REPRESENTATIVE Jim Veenstra
 CAST ENTERTAINMENT Dr. J. H. Snedden
 Assisted by
 REHEARSAL PIANIST Bonnie Beckét
 JITTERBUG SCENE CHOREOGRAPHED BY
 Dee and Del Pickett
 CHORAL ASSISTANT-SOLOS Lillian Torrie
 PHOTOGRAPHS BY McCorkle Studios
 PROGRAM COVER DESIGN Les Smith

ACKNOWLEDGEMENTS

Walter Huckvale Chapter I.O.D.E.; Chinook Beverages; Woolworth's; Harvey Stockberger; Towne House Beauty School; Rosey Florists; Alberta Government Telephones; Cypress Business Machines; Western Auto Wreckers; Beveridge's Furniture; Fannie's Fabrics; Alma's Fabrics; Medicine Hat Moving & Storage; McCorkle Studios; Medicine Hat News; CHAT-TV CHAT Radio; Medicine Hat College; Medicine Hat College Conservatory; Canada Trust.

Bill Wahl; Lorne Havarid; Ernie Hall; Karl Bruhn; Doug Brown; Peter Mossey; Southview I.G.A.; Stone Furs; Medicine Hat Public Library; Jack Marshall; Pat Meledones; Pearl Black; Lynn Solly; Val Marshall Printing; Dave Smithson.

The Board of Medicine Hat Musical Theatre gratefully acknowledges the talents of the orchestra under the capable direction of Carle Duguid. A show such as "MAME" could not be successful without a qualified orchestra to accompany the actors, singers and dancers.

Sincere appreciation is expressed also for the support of the advertisers as well as the assistance and cooperation of all those who helped in making this production possible and regrets having missed anyone from these acknowledgements.

SOUTH EASTERN PIPELINE
 CONSTRUCTION LTD.
Wishing "MAME" Every Success
WISHING "MAME" EVERY SUCCESS

1402 BRIER PARK CRESCENT N.W. TELEPHONE
 P. O. BOX 638 527-3150
 MEDICINE HAT, ALBERTA AREA CODE 403

"THE REAL PIZZA"
 MEDICINE HAT'S NEWEST PIZZA HOUSE



110 SOUTH RAILWAY STREET
 FREE DELIVERIES Phone 527-6955

SOUTHVIEW



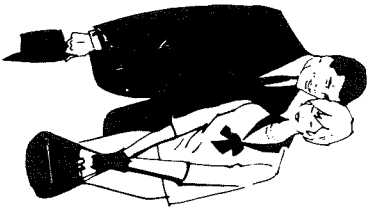
SOUTHVIEW
 MALL
BEST WISHES



Ph. 526-6911

**WE'RE YOUR PEOPLE WITH
QUALITY, SERVICE, SELECTION**

Have a successful run!



Let's talk

There's one thing that's always true about money when you take care of it, it takes care of you. At the Bank of Montreal, we know how to make money work for you, whether you're saving or borrowing.

Whatever you'd like to talk about come in and talk to us. At the Bank of Montreal, we want you to get the best financial advice available.



The First Canadian Bank
Bank of Montreal

BEST WISHES

GAFFNEY, HENCHEL ADJUSTERS LTD.



INSURANCE ADJUSTERS & APPRAISERS

413 - 6th Ave. S.E. Medicine Hat

**EVERY SUCCESS WITH
YOUR PRODUCTION OF
"NAME"**

Jack Russell

Jim Needham

MEDICINE HAT HOTEL ASSOCIATION

- ASSINIBOIA INN
- CECIL HOTEL
- CONTINENTAL INN
- CORONA HOTEL
- PARK LANE MOTOR HOTEL
- ROYAL HOTEL
- WESTLANDER INN

Best wishes for your production of NAME!

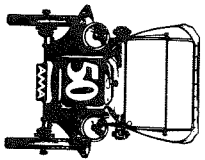
MEDICINE HAT SYMPHONY CONCERTS AT THE COLLEGE THEATRE

- Dec. 8, 1976 Guest Soloist: Stefan Stelanowski, violin, John Komanchuk, narrator
- Mar. 8, 1977 Soloists: Carle Duguid, violin
Larry Krantz, flute
- April 3, 1977 Chamber music, Woodwind Quintet and String Quartet
- May 17, 1977 Guest Soloist: Kenneth Murdoch, piano



GLASS OF ALL TYPES

MEDICINE HAT - BROOKS - SWIFT CURRENT



**ALBERTA MOTOR ASSOCIATION
TRAVEL AGENCY LIMITED**

After the
"SHOW"

TRAVEL WITH US

Phone 527-1166



WE WISH YOU EVERY SUCCESS



**FREDDIE'S PAINT
(Western) LTD.**

310A DIV. AVE. S.W., MEDICINE HAT
Phone 526-6712

Enjoy The Musical Theatre
Production "MAME"

COMPLIMENTS OF

EATON'S MEDICINE HAT

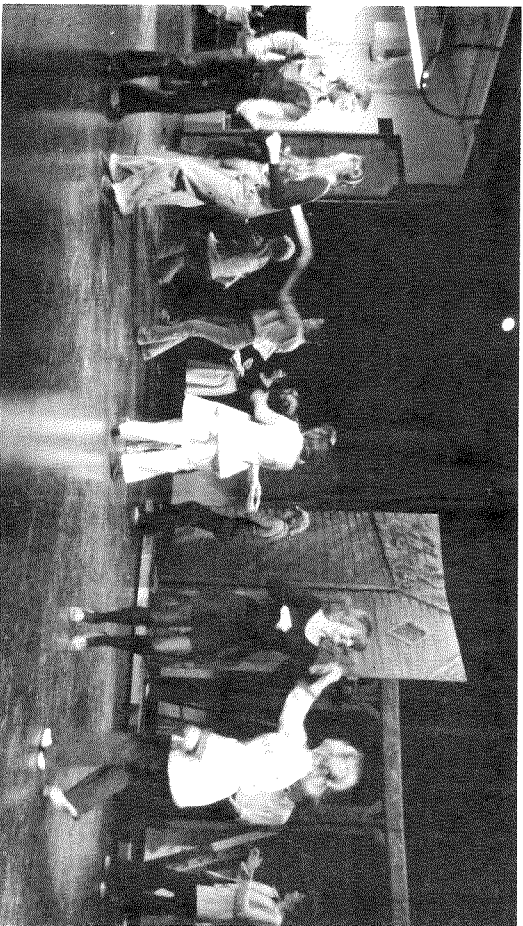


Quality corner TV & Stereo
sold and serviced by specialists

JACK'S RADIO & T.V. LTD.

CORNER 6th AVE. & 4th STREET S.E.

PRODUCTION AND REHEARSAL SCENES



PHOTOS COURTESY OF McCORKLE STUDIOS

GOODYEAR

**CANADA INC.
MEDICINE HAT PLANT**

BEST WISHES FOR

ANOTHER GREAT PRODUCTION

CONGRATULATIONS ON YOUR
PRODUCTION OF "MAME"



P LAWSON TRAVEL
the Holidaymakers
associated with
BEL-AIR TRAVEL • VOYAGES BEL-AIR
BURKE'S WORLD WIDE TRAVEL • BURRITT TRAVEL

675 - 3rd Street S.E.

Phone 527-7131

CHISHOLM ELECTRIC LTD.

Complete
Electrical Service

Good luck with your production
of "MAME"

Phone 526-6158

Phone 527-5654

COMPLIMENTS OF
**Canadian Imperial
 Bank of Commerce**

577 - 2nd St. S.E. 501 - 3rd St. S.E. 21 - 8th St. N.W.
 527-4491 527-1998 Crescent Heights
 527-7703

*Every success to
 "MAME"*

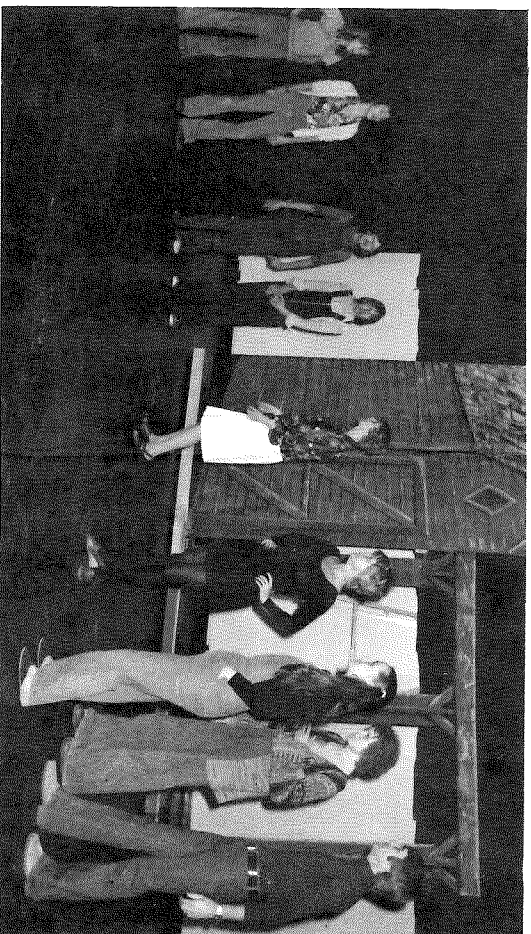
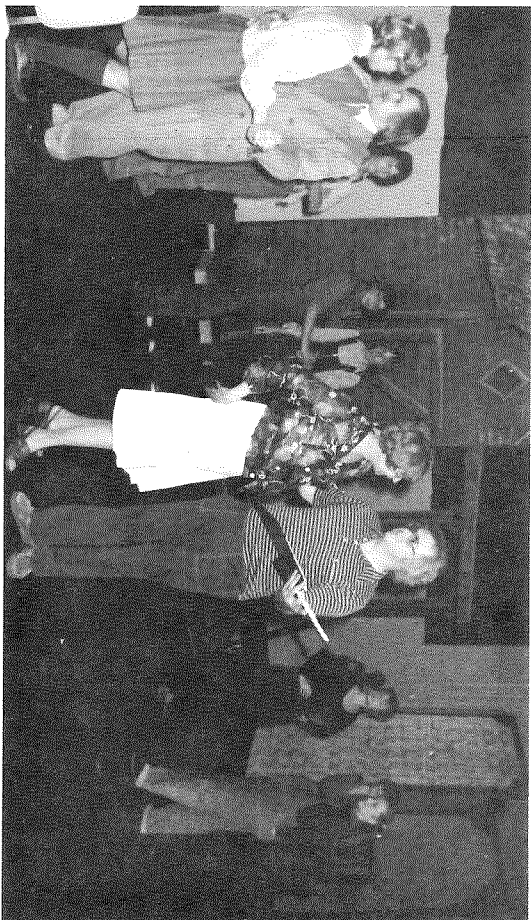
STONE FURS

"If You Don't Know Your Furs... Know Your Furrrier"
 Phone **527-8200**
 528 Second Street
 Medicine Hat

Baveridge's *Furniture* *Shops*

Furniture Fashion Centre
 620 - Second Street S.E.
 Medicine Hat, Alberta

PRODUCTION AND REHEARSAL SCENES



PHOTOS COURTESY OF MCGORKLE STUDIOS

Ed's Studio Craft

Canadian & Imported Arts
 635 - 3rd St. S.E.
 Medicine Hat, Alberta

The Ming Tree

Fully Licensed Dining Lounge
 & Lounge
 "Nightly
 Entertainment"

FOR RESERVATIONS
 CALL 527-3334 527-3335

BEST WISHES

**FOR A SUCCESS IN YOUR
 PRODUCTION "MAME"**

TREASURY BRANCHES

PRODUCTION AND REHEARSAL SCENES



PHOTOS COURTESY OF MCCORKLE STUDIOS

IN SUPPORT OF A FINE PRODUCTION



ROYAL BANK
SERVING ALBERTA

Joan's Dress Shop

LARGE ENOUGH TO SERVE YOU
SMALL ENOUGH TO WANT TO

Telephone 527-4666
Joan Anderson, Res: 526-2974

23 Arcade Mall
Medicine Hat, Alta.



Medicine Hat
MOVING & STORAGE LTD.

BEST WISHES FOR "MAME"

1976



JAYS GENTRY



THE HUB



BOND



THE DIFFERENT DRUMMER



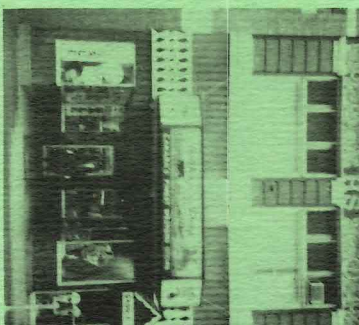
BILL WRAY'S



DEL ROSSI



HAWTHORNE'S



HUTCHINGS & SHARP

THE MEDICINE HAT MEN'S WEAR ASSOCIATION

wishes
the
cast and crew
a most
successful production!