

MEDICINE HAT
MUSICAL THEATRE

Nov.
1979

PRESENTS

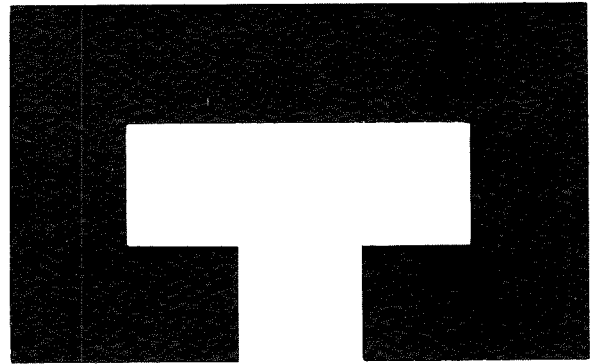
B
B R I G A D O O N

B R I G A D O O N



Al: t. 1. 1. 1.

**CANADA
TRUST**



Best Wishes
for a successful run

LES SMITH
Manager

Telephone 527-2222

TO ALL THOSE INVOLVED IN BRIGADOON

YOU

ARE PROUD OF YOUR PRODUCTION AND

WE

ARE PROUD OF OUR PRINTING

MODERN PRESS

MEDICINE HAT, ALBERTA, CANADA

THE PRINTERS OF THIS SOUVENIR PROGRAM



**MEDICINE HAT
MUSICAL THEATRE**

PRESENTS

BRIGADOON

- * Music by Frederick Loewe
- * Book and Lyrics by Alan Jay Lerner

MEDICINE HAT COLLEGE THEATRE

NOV. 16 and 17; NOV. 20 thru NOV. 24, 1979
8:15 p.m.

SUNDAY MATINEE: NOV. 18, 2:00 p.m.

"BRIGADOON" is presented through
special arrangements with
TAMS-WITMARK Music Library Inc.
757 - 3rd Avenue, New York 17, New York, U.S.A.

Produced by

MEDICINE HAT MUSICAL THEATRE

MEDICINE HAT PIANO & ORGAN CENTRE



A WESTERN KEYBOARD STORE

TOWNE THEATRE BUILDING

- * HAMMOND ORGANS
- * HEINTZMAN PIANOS
- * RODGERS ORGANS
- * SHERLOCK-MANNING PIANO'S

527-0636

FRANK GODLEY

MUSICAL THEATRE

One of the nice things
about living in Medicine Hat.



REDCLIFF PRESSED BRICK DIVISION
MEDICINE HAT BRICK DIVISION
MEDICINE HAT PIPE DIVISION

CARMEN THOMPSON



WHOLESALE INDUSTRIAL
& AGRICULTURAL
DISTRIBUTORS

**A&B STEEL AND
ALUMINUM LTD.**

"Congratulations on a Great Musical"

902 South Railway St.

Phone 526-5927

Telex 038-4811

Box 788, Medicine Hat, Alta.

BEST WISHES FROM

Levinson Music 1975



Where you can get everything
in Music

PHONE 526-2160

218 - SOUTH RAILWAY STREET

MEDICINE HAT, ALBERTA

MAPLE LEAF MILLS LTD.



PURITY FLOUR
MONARCH CAKE MIXES
TEA BISK

"CONTINUED SUCCESS"



The
NEWS

MEDICINE HAT

WISHING YOU

EVERY SUCCESS

Congratulations on another SMASH HIT!

From LESLIE MALTIN (owner-manager) and all the
staff at the

CARNIVAL
Mentor

We've got the Best
Beat in Town!

618 - 3 St. S.E.

The Rosery Florist Ltd.

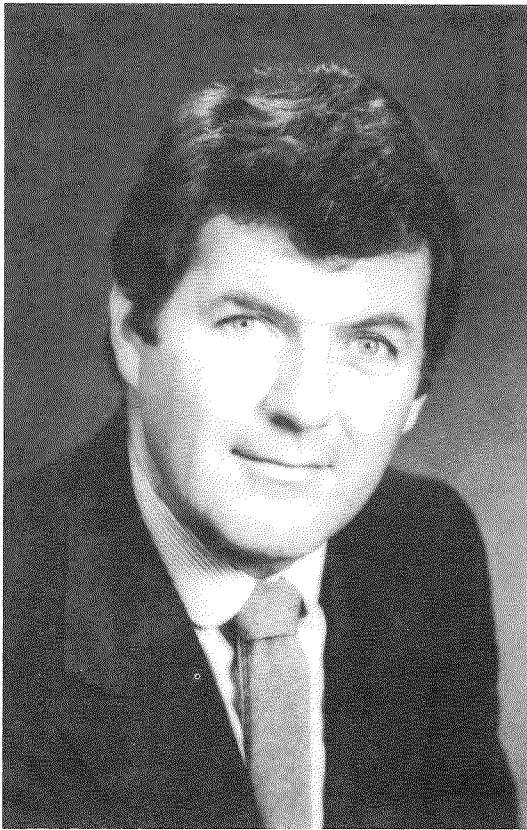
Bouquets to BRIGADOON



552 - 2nd Street S.E.

Medicine Hat, Alta.

526-3534



WAYNE CRAVEN

President's Message

Welcome to Brigadoon!

We hope you enjoy the show and will encourage others to attend. Our cast and crew give freely of their time and talent to present an ongoing excellence in amateur musical theatre in the community.

Medicine Hat Musical Theatre continues to be active in the cultural development of the City and district. We again awarded two scholarships at the recent Rotary Music Festival. We also sponsored a student to the Banff School of Fine Arts summer school as well as cash donations to local young people who recently joined the "Up with the People" touring group. We also present ongoing scholarships to people attending the Provincial Summer Workshops in Music and Drama.

We recognize the importance of the performing Arts in the overall cultural development of Medicine Hat and District.

We also recognize your continuing support and we encourage you to continue that support by attending the many and varied performing and visual arts presentations in our Community.

Wayne Craven
President



— BOARD OF DIRECTORS —

PRESIDENT: Wayne Craven

VICE-PRESIDENT: Stan Lerner

PAST PRESIDENT: Alex Shand

SECRETARY: Audrey Armstrong

TREASURER: Betty Park

CAST REPRESENTATIVE: Bob Gehring

DIRECTORS: Ian MacDonald, Les Philips, Evan Tonin, Eva Weiler, Ron Zablocki

HONORARY DIRECTORS: Dr. H.F. McKenzie, Marion Shand, Larry Townsend

LIFE MEMBERS: Wally Hayne, Bee Lewis

MARSHALL'S BOOK STORE LTD.
6YPRESS BUSINESS EQUIPMENT

MEDICINE HAT

621 Second St. S.E.
527-6696

939 Seventh Ave. S.E.
527-6691

HERE'S TO ANOTHER HIT!



cedar square INSURANCE CENTRE LTD.

Your Family and Business Insurance Centre

666 - 4 St. S.E.

Ph. 527-6611

FRANK GODLEY

Director of Music

5th AVENUE UNITED CHURCH

ORGAN TUITION

Home: 527-3745

Studio: 526-2237

FANNY'S FABRICS

- * The largest selection of fashion fabrics, drapery, and upholstery in Southern Alberta.
- * We do custom drapery work complete with rods and decorator accessories.

**CONGRATULATIONS & BEST WISHES
TO THIS YEAR'S MUSICAL THEATRE**

1667 Dunmore Road S.E.
Medicine Hat, Alberta

Ph. 527-9733

GREEN'S SHOES LADIES &
CHILDREN
615-3rd St. S.E.

GREEN'S MEN'S SHOES

626-3rd St. S.E.

DISCO SHOES NO. 3

216 S. Railway St.

SHOP DOWNTOWN

KEN & FLORENCE
GARDNER

FOR SERVICE STYLE AND SATISFACTION

HAT SALVAGE & STEEL LTD.



Complete stock
of
new steel and pipe

1248 S. Railway St. S.E.
Medicine Hat, Alberta

Bus. 527-3800
Res. 527-1860

SCRAP ONLY — 526-7199

Congratulations to BRIGADOON



P.O. BOX 310, MEDICINE HAT
ALBERTA, CANADA

MEDICINE HAT SOCIETY OF PHARMACISTS

Boylan Drugs No. 1, Boylan Drugs No. 2
Boylan Drugs - Redcliff, Boylan Drugs No. 3
Crescent Heights Rexall Pharmacy, Duncan's
Rexall Drug Store, MacKenzie Drug Co 1975
Ltd., Crestwood Pharmacy, Sept's Prescription
Drug Ltd., Redcliff Drugs

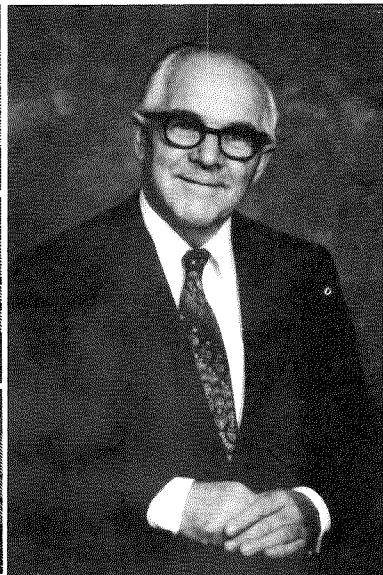
EVERY SUCCESS TO BRIGADOON



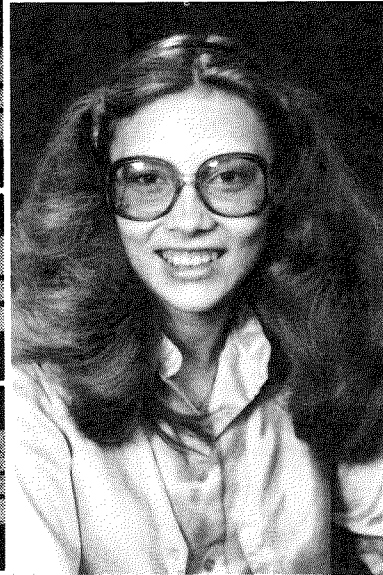
KAROLYN HARKER
DIRECTOR



SANDRA CRAVEN
PRODUCER



ALEX SHAND
MUSICAL DIRECTOR
& CONDUCTOR



LINDA SMITH-McGREGOR
CHOREOGRAPHER

**THE
CLINIC**
TRADEMARKS REG. U.S. PAT. OFF. & CANADA. MADE IN U.S.A.
SHOE
for Young Women in White®

BEST WISHES FOR YOUR
PRODUCTION OF BRIGADOON



Ru-Har Shoes Ltd.

628 - 3rd STREET S.E.
DOWNTOWN MEDICINE HAT

— Complete Line of Fine Shoes for Ladies and Men —

Levi's
Levi's for feet

air step
shoes

FLEMING'S MUSIC

YOUR ONE-STOP RECORD STORE

Rock, Classical, Folk, Children's,
Country and Western, International

WISHING YOU EVERY SUCCESS

528A - 3rd Street S.E., MEDICINE HAT

INSURING YOU LOTS OF SUCCESS THE LIFE UNDERWRITERS OF MEDICINE HAT

Canada Life	Green Agencies
Sun Life of Canada	Occidental Life
Co-operative Life Co.	Federated Insurance
Zurich Life of Canada	Empire Life of Canada
Mutual Life of Canada	Lutheran Life of Canada
London Life	Prudential of America
Allstate Life of Canada	Metropolitan Life
Monarch Life	New York Life
Citadel Life	

George's House of Diamonds



517 - 3rd Street S.E.
Medicine Hat, Alta.

Ph. 526-3669

SOUTHVIEW



SOUTHVIEW
MALL

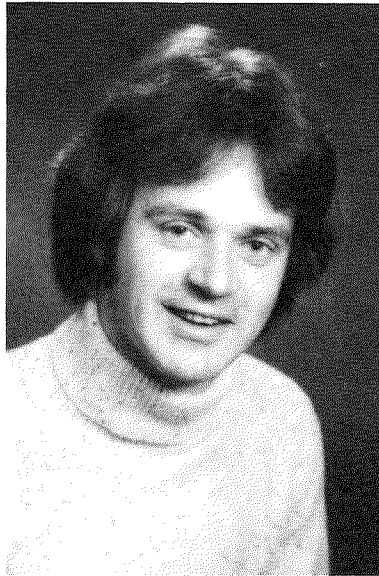
BEST WISHES



**JEAN VAN WERT
& BOB GEHRING**
~~Jean MacLaren & Charlie Dalrymple~~
MEG BROCKIE + JEFF DOUGLAS

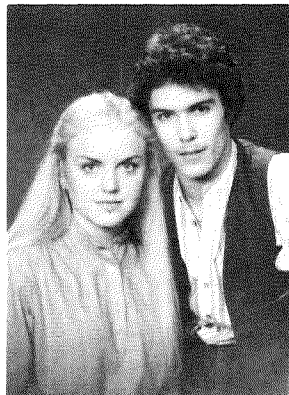


LINDA ARTHUR
as "FIONA MacLAREN"
Linda is a Lethbridge girl who moved to Medicine Hat three years ago. She is a teacher and a former member of the Adele Armstrong Singers. Her acting credits include the part of Nellie Forbush in 'South Pacific.'

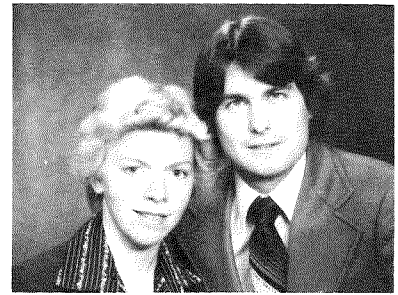


NEIL MILLAR
as "TOMMY ALBRIGHT"
Neil, who was raised in Medicine Hat, caught the acting 'bug' quite early. He gained extensive experience in High School and Hatterland Theatre productions, then gave fine performances in 'The Sound of Music', 'Where's Charley?' and 'Fantasticks.' He performed in the Banff School of Fine Arts production of 'Brigadoon', and last year was Lancelot in Lethbridge Musical Theatre's production of 'Camelot'.

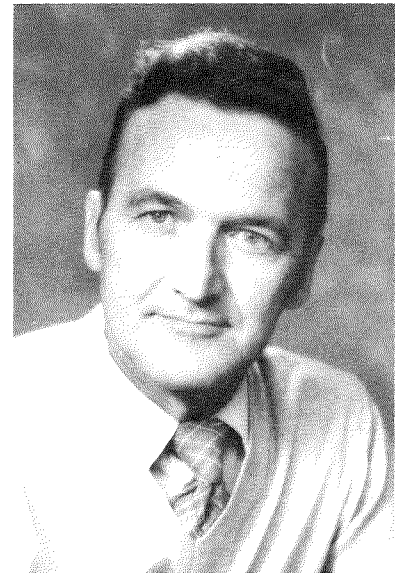
Photos Courtesy of
McCorkle Studios



**KATHY JEGGO
& DALE VERWOOD**
Maggie Anderson
& Harry Beaton



**GEORGIA HUNTER
& TOM FERGUSON**
~~Meg Brockie & Jeff Douglas~~
JEAN MACLAREN + CHARLIE DALRYMPLE



RON MILLER
as "Mr. LUNDIE"
Ron is well-known to Medicine Hat audiences, having played leading roles in many theatrical and musical productions. He is particularly well remembered for his portrayal of Fagin in 'Oliver' and Lancelot in 'Camelot.'

Synopsis of the Scenes

Long ago the ancient Scottish village of Brigadoon can tell a strange and beautiful story of how two Americans hunted the miracle of the re-appearance of Brigadoon, an event which had been predicted by a prophecy.

The villagers gather for the wedding of Charlie Dalrymple and young Harry Beaton, whose love for Jean has been the cause of his son's death. During the festivities Tommy is attracted to Fiona and she resists his strenuous resistance.

Mr. Lundie, the Dominie, explains to the puzzled travellers that indeed, after Harry Beaton tries to force his attentions on her, she is leaving Brigadoon, so that all will vanish.

The problem is solved by the death of Harry. Maggie has the poignant funeral dance.

Despite his love for Fiona, Tommy returns with Jeff to America. Months later, unable to forget Fiona, he returns to Brigadoon with the words - "I told ye lad, when ye love someone de

ACT I

PROLOGUE 'Once in the Highlands'

SCENE I A FOREST IN THE SCOTTISH HIGHLANDS
Early on a May morning

'Brigadoon' Chorus
'Venders' Calls'

SCENE II A ROAD IN BRIGADOON
then MacCONNACHY SQUARE
Later that morning

'Down on MacConnachy Square' Chorus and Dancers
'Waitin' For My Dearie' Fiona and Girls
'I'll Go Home with Bonnie Jean' Charlie and Chorus
'The Heather on the Hill' Tommy and Fiona

SCENE III THE BROCKIE OPEN SHED
Just past noon

'The Love of My Life' Meg

SCENE IV THE MacLAREN HOUSE
Just past noon

'Jeannie's Packin' Up' Girls of the Chorus
'Come to Me, Ben' to Me' Charlie
'Almost Like Being in Love' Tommy and Fiona

SCENE V OUTSIDE THE HOUSE OF MR. LUNDIE
Immediately following

SCENE VI OUTSIDE THE KIRK OF BRIGADOON
At dusk

'Entrance of the Clans' Full Cast
'Wedding Ceremony and Dance' Full Cast
'Sword Dance and Reel' Harry and Dancing Ensemble

and Musical Numbers

is [redacted] from the face of the earth. This musical play is a [redacted]rs, Tommy Albright and Jeff Douglas, get caught up in [redacted]t that occurs only one day every hundred years.

ple and Jean MacLaren. It is a happy occasion for all [redacted]rejected. He in turn scorns the love of Maggie Ander- [redacted]MacLaren and flirtatious Meg Brockie claims Jeff, des-

llers the miracle of Brigadoon, and how fragile it is. And [redacted]on Jean at the Wedding Dance he defiantly tells the [redacted]for ever.

Anderson's grief and despair is portrayed beautifully in

New York, where his fiancée is waiting for him. Four [redacted]doon, where he is met by Mr. Lundie, who greets him [redacted]eply, anythin' is possible, even miracles."

INTERMISSION (Fifteen Minutes)

Coffee and soft drinks will be sold in the cafeteria by members of the
Walter Huckvale Chapter, I.O.D.E.

ACT II

ENTR' ACT

SCENE I A FOREST INSIDE BRIGADOON

Later that night

'The Chase' Harry and Men of the Chorus

SCENE II A ROAD IN BRIGADOON

Later

'There but for You Go I' Tommy

SCENE III THE GLEN

Soon after

'Glen Scene Opening' Chorus and Dancers

'My Mother's Weddin' Day' Meg and Chorus

'The Funeral' - FUNERAL DANCE Maggie Anderson

'From This Day On' Tommy and Fiona

SCENE IV A BAR IN NEW YORK CITY

Four months later

SCENE V THE FOREST

Three nights later

'Finale' Full Cast

(NO FLASH CAMERAS DURING PERFORMANCE, PLEASE)

CAST OF CHARACTERS

(In order of appearance)

TOMMY ALBRIGHT Neil Millar
JEFF DOUGLAS Bob Gehring
ARCHIE BEATON Bill Smith
HARRY BEATON Dale Verwoerd
ANGUS MacGUFFIE John Bertram
SANDY DEAN Brad Neubauer
STUART DALRYMPLE Daniel Bertram
ANDREW MacLAREN Randolph Smyth
FIONA MacLAREN Linda Arthur
JEAN MacLAREN Georgia Hunter
MEG BROCKIE Jean Van Wert
CHARLIE DALRYMPLE Tom Ferguson
MAGGIE ANDERSON Kathie Jeggo
MR. LUNDIE Ron Miller
FRANK Larry Boswell
JANE ASHTON Anne Revington

'BRIGADOON' ORCHESTRA

CONDUCTOR — Alex Shand

VIOLIN:

Carle Duguid
Jacelyn Racette
Paul Van der Sloot
Frank Riddle
Sue Pannekoek
Scot Duguid

VIOLA:

Andrea Ashton

CELLO:

Cheryl Epp
Leslie Wyber

TRUMPET:

Robert McCullough
Harold Exner
Randy Tronsgard

TROMBONE:

David Woodcock

BASS GUITAR:

Wayne Spackman

FLUTE, PICCOLO:

Karen Boswell
Rodney Gray

CLARINET:

Mary Field
Daryl Gray

BASSOON:

Colin Cooper
Robert Morewood

FRENCH HORN:

Linda Mastel

PERCUSSION:

Gordon Baumann

PIANO:

Mabel Pedersen

TOWNSFOLK OF BRIGADOON —

Barbara Beggs; George Bell; Iona Belous; Andrew Bertram; Janyne Bertram; Johanne Bertram; John Bertram; Larry Boswell; Manuel Esteban; Donna Forbes; Vicki Gibson; Marg Giurissevich; Robin Giurissevich; Deborah Hoefling; Kathie Jeggo; Leslie Kajewski; David Mastell; Dorothy Nichol; Mac Nichol; Betty Park; Thelma Pinder; Anne Revington; Marion Shand; Mary Smith; Scott Smith; Mary Swan; John Van Dam; Robin Yeast; Joyce Zablocki.

PIPERS —

Eric Kean; Ron Shannon, Gisli Sigmundson.

PRODUCTION CREDITS

PRODUCER

Sandra Craven

MUSICAL DIRECTOR & CONDUCTOR

Alex Shand

DIRECTOR

Karolyn Harker

CHOREOGRAPHER

Linda Smith-McGregor
Assisted by Jean Van Wert

ASSISTANT DIRECTOR

Ron Miller

SCENIC ARTIST

Arlene Litchfield

SET DESIGN - Hal Shane

Assisted by: (Painting) Vicki Gibson; Jan Standing; Jean Christensen; Karolyn Harker; Connie Viola; Hal Shane; Doug Harker; Kathy Henry; Rulon Litchfield; Wade Litchfield.

STAGE MANAGER - Bill Pringle

Assisted by: (Set Construction & Back Stage Crew):
Ralph Richardson; Gerry Bagshaw; Dan Edison; Hal Shane.

LIGHTING DESIGNER - Bpb Rose

Assisted by: Lee Durkin; Wayne Craven.

COSTUME DESIGN - Gwen Davies

Assisted by: Netta Drever; Sheila Drever; Gail Macdonald; Helen Appleton; Marg Giurissevich; Dot Nicol.

PROPERTIES - Carol Durkin

Assisted by: Myrna Pringle; Valerie Richardson.

MAKE-UP - Louise Perkins

Assisted by: Jean Christensen; Maureen Finkelman; Susan Dennison; Peggy Kelly; Jean Altin.

REHEARSAL PIANIST - Mabel Pedersen

CAST REFRESHMENTS - Elaine Schacker

STANDING COMMITTEES

Box Office & Tickets Evan Tonin, Joan Brown,
Larry Townsend, Dorothy McNally,
Gwen Schieman, Stan Wilkinson,
Betty and Frank Butler, Mary Robertson,
Lillian Torrie, Harriet McKenzie

Treasurer Betty Park

Front of House Stan Lerner

Advertising Audrey Armstrong
Ron Zablocki

Publicity & Posters Ron Zablocki
Peter Condon

Program Peter Condon
John Dunlop

Program Advertising Bert Maltin

Opening Night Wayne Craven
Ron Zablocki

Cast Entertainment Ian MacDonald

Cast Representative Bob Gehring

Ushers The Teen-Tones

Photographs by McCorkle Studios

Candid Photos by Debbie Hoefling

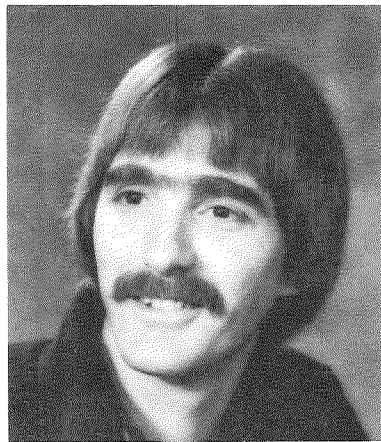
ACKNOWLEDGEMENTS

All Saints Anglican Church; Church of the Latter Day Saints; Fifth Avenue United Church; City of Medicine Hat; Medicine Hat Public Library; Medicine Hat News; CHAT Radio & T.V.; Medicine Hat School District No. 76; 2nd Look Boutique; Ron Sauter, Medicine Hat Historical Museum; T. Eaton Co.

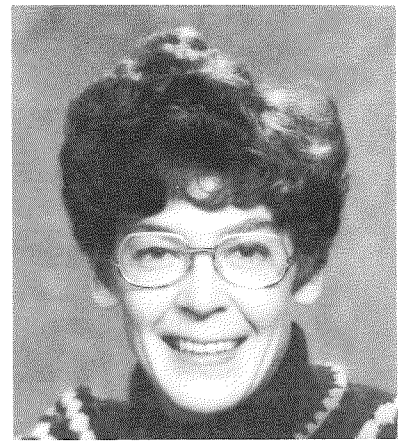
The Board of Medicine Hat Musical Theatre gratefully acknowledges the support of local merchants and advertisers, as well as the co-operation of all who contributed in any way to the success of this year's production. These efforts are most sincerely appreciated



ARLENE LITCHFIELD
SCENIC ARTIST

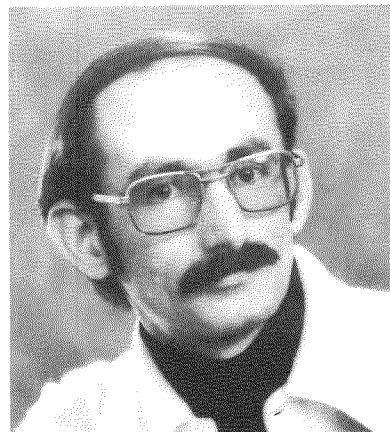


BILL PRINGLE
STAGE MANAGER



GWEN DAVIES
COSTUME DESIGN

Photos Courtesy of McCorkle Studios



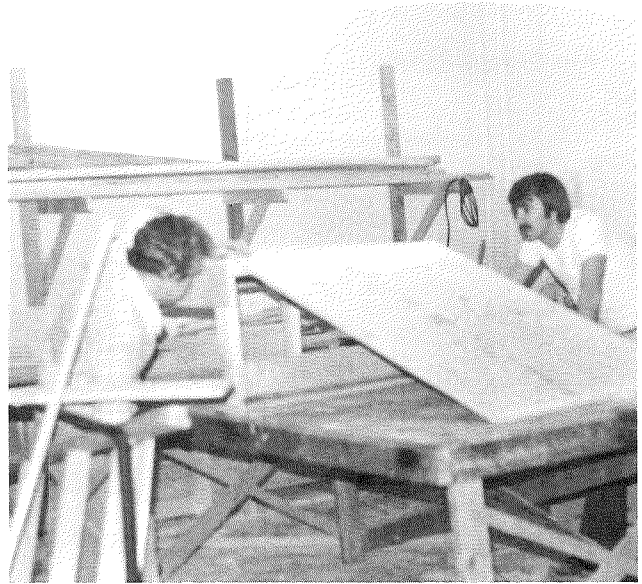
BOB ROSE
LIGHTING



CAROL DURKIN
PROPERTIES



LOUISE PERKINS
MAKE-UP



Symphony Season 1979-80

Medicine Hat Symphony Orchestra

- Tuesday, Oct. 30th — M.H. Symphony Orchestra
 Tuesday, Feb. 26th — Young Artist Talent Festival
 and M.H. Symphony Orch.
 MARCH 1980 — Edmonton Youth Orchestra
 Tuesday, May 6th — Carol McLaughlin, harpist
 M.H. Symphony Orchestra



**WE'RE YOUR PEOPLE WITH
 QUALITY, SERVICE, SELECTION**

Have a successful run!

MEDICINE HAT HOTEL ASSOCIATION

**MEDICINE HAT INN
 ASSINIBOIA INN
 CECIL HOTEL
 CONTINENTAL INN
 CORONA HOTEL**

**REDCLIFF HOTEL
 OLD MILL INN
 PARK LANE MOTOR HOTEL
 TRAVELODGE MOTOR INN
 ROYAL HOTEL**

WESTLANDER INN

Best wishes for your production of BRIGADOON

PROGRAMME PORTRAITS

courtesy of



628 - 2nd Street S.E.
Medicine Hat, Alberta

*See us for
all Your
Photographic
Requirements*

**BUS. 526-3927
RES. 526-5082**

**MEMBER
PROFESSIONAL PHOTOGRAPHERS OF CANADA**



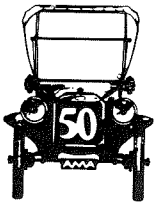


Co-operation...

is essential for the success of any community enterprise. In our own case, we exist because of the co-operation and individual enterprise of the farmers of Western Canada. So, we congratulate with deep understanding the co-operation and individual initiative which together have helped this particular venture so much.



WESTERN
CO-OPERATIVE FERTILIZERS
LIMITED



**ALBERTA MOTOR ASSOCIATION
TRAVEL AGENCY LIMITED**

After the
"SHOW"

TRAVEL WITH US

Phone 527-1166



EVERY SUCCESS WITH
YOUR PRODUCTION OF

"BRIGADOON"

**RUSSELL & NEEDHAM
Architects Ltd.**

Jack Russell

527-8111

Jim Needham

Fyke's Music Center
(1978) LTD.

523 - 3rd Street S.E.
Cassels Centre Mall

Medicine Hat
Brooks

Home of famous YAMAHA ORGAN

BUS. 527-4288

RES. 526-9027

Best wishes to
BRIGADOON



JACK'S RADIO & T.V. LTD.

526-4998

CORNER - 6th AVE. & 4th ST. at the Market Square

BEST WISHES

HENCHEL & COMPANY ADJUSTERS LTD.



INSURANCE ADJUSTERS & APPRAISERS

413 - 6th Ave. S.E. Medicine Hat

Capital GLASS
LTD.

GLASS OF ALL TYPES

MEDICINE HAT - BROOKS - SWIFT CURRENT

WE WISH YOU EVERY SUCCESS



**FREDDIE'S PAINT
(Western) LTD.**

310A DIV. AVE. S.W., MEDICINE HAT
Phone 527-6621

**Enjoy The Musical Theatre
Production "BRIGADOON"**

COMPLIMENTS OF

EATON'S MEDICINE HAT

**CONGRATULATIONS ON YOUR
PRODUCTION**



P. LAWSON TRAVEL
the holidaymakers

associated with
BEL-AIR TRAVEL • VOYAGES BEL-AIR
BURKE'S WORLD WIDE TRAVEL • BURRITT TRAVEL

675 - 3rd Street S.E.

Phone 527-7131

CHISHOLM ELECTRIC LTD.

**Complete
Electrical Service**

Good luck with your production

Phone 526-6158

Phone 527-5654

The **Ming Tree**

Fully Licensed Dining Lounge
& Lounge

*"Nightly
Entertainment"*

FOR RESERVATIONS

CALL 527-3334 527-3335

BEST WISHES

**FOR A SUCCESS IN YOUR
PRODUCTION
BRIGADOON**

TREASURY BRANCHES

MEDICINE HAT - REDCLIFF - IRVINE

Ed's Studio Craft

635 - 3rd Street S.E., Medicine Hat, Alta.

and

Moritz Masonry & Tile Supply

1006 S. Railway Street, Medicine Hat, Alta.

Congratulations For A Fine Performance

KITCHENIQUE

32 Southview Mall

"Congratulations on a Great Show"

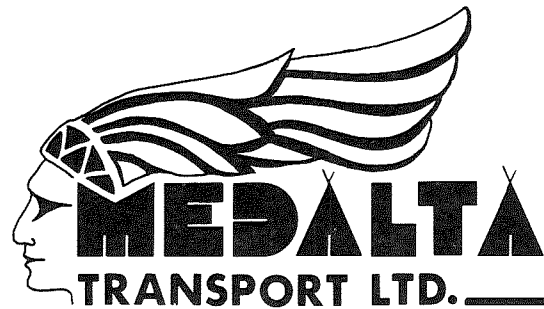
526-6500

COMPLIMENTS OF

Canadian Imperial Bank of Commerce

577-2nd St. S.E. 501-3rd St. S.E. 21-8th St. N.W.
527-4491 527-1998 527-7703

BEST WISHES



Every success to
"BRIGADOON"

STONE FURS

"If You Don't Know Your Furs...Know Your Furrier"

Phone **527-8200**

528 Second Street

Medicine Hat

Joan's Dress Shop

LARGE ENOUGH TO SERVE YOU

SMALL ENOUGH TO WANT TO

Telephone 527-4666

23 Arcade Mall

Bernice Hanke, Res. 527-2398 Medicine Hat, Alta.


Beveridge's *Furniture Ltd.*

Furniture Fashion Centre

620 - Second Street S.E.

Medicine Hat, Alberta



D.M. (DAVE) SELSKI
Assistant Manager

THE ROYAL BANK OF CANADA

Main Branch

Medicine Hat, Alberta

Telephone 526-2817



***Do you want action . . .
(not promises) and . . .***

SOLD

on your property?

Then list your property with us, the
leading "SELLERS" in this area.

1741 Dunmore Rd. S.E.

DIAL 527 - 7653
SOLD

CEDAR SQUARE BUILDING

666 - 4th Street S.E.

DIAL 526 - 7653
SOLD

5 - 120 Broadway Ave, E., Redcliff
— 548-7555 —



Marlin travel service

**YOUR PROFESSIONAL'S IN TRAVEL
FOR TRIPS
"AROUND THE CORNER OR AROUND
THE WORLD"**

**COMPUTER SERVICE FOR
INSTANT CONFIRMATION OR RESERVATION**

**Open Evenings
For Your Convenience**

**Now Located In
Medicine Hat Mall**

**Marlin
travel service**

Phone 526-6605

**MEDICINE HAT MALL
MEDICINE HAT, ALBERTA**