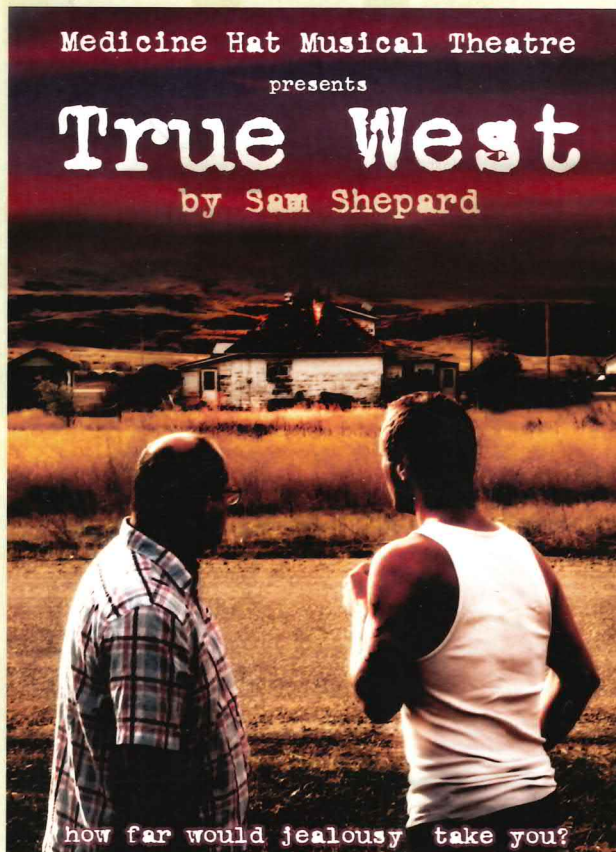


True West

M E D I C I N E H A T M U S I C A L T H E A T R E P R E S E N T S

"TRUE WEST" BY SAM SHEPARD



Medicine Hat Musical Theatre proudly presents the tale of two brothers. Austin, a "successful" young man with a family and a budding screen writing career house-sits for his mother who is away on vacation. He has come here for privacy to work on a screenplay, but is quickly interrupted by his brother Lee, an unshaven alcoholic, thief, and "loser" who has also decided to return home. At first Lee only intends to steal a few items of value from his mother's neighbors, then move on.

Although Austin protests, he quickly realized there is little he can do to change his brother's behavior and simply requests that he be out of the house by the following day when Austin is expecting a visit from a Hollywood producer, Saul Kimmer. The two brothers gradually undergo a role reversal. As Lee vainly attempts to put his movie idea into script form, Austin goes on a stealing spree. Soon the two brothers are, quite literally, at each other's throats.

DIRECTOR'S MESSAGE BRANDEN MARTIN

"I stumbled upon Sam Shepard's TRUE WEST in my first year of BFA training at the University of Alberta when I was sitting in an empty theatre library surrounded by the "greats". I was drawn to this piece because it showed how family structure, when put to the test, can exaggerate the primitive and erode what we consider 'normal'. This story challenges the concept of the family unit. We all have a relative, the so-called "black sheep", who doesn't get invited to family picnics. Lee is that character; whereas, Austin represents what we, as a society, expect on a daily basis. The play raises questions: What would you do if you couldn't escape? When is enough really enough? How far would jealousy take you?
On behalf of my amazing team and myself, I hope you enjoy the show"

CAST LIST

IN ORDER OF APPEARANCE

AUSTIN—NIC DIETERLE	LEE—JIM RISSLING
SAUL KIMMER—DAVE CRUICKSHANK	MOTHER—CAROLYN FREEMAN

OTHER IMPORTANT PEOPLE

PRODUCTION MANAGER	LINDA GORDON	FIGHT CHOREOGRAPHER	BRANDEN MARTIN
Assisted by	- Lydia Fanelli	SET CONSTRUCTION	LOFT CREW
DIRECTOR	BRANDEN MARTIN	Lawrence Gordon	Derek Martin
STAGE MANAGER	JULIA LAWRENCE	Ray Hoger	Blair Bohnet
BOX OFFICE	DELLA JESSE	Ken Biemans	Fred Robins
HOUSE MANAGER	DELLA JESSE	Bruce Sandford	Des Krause
Assisted by	- Randi L'Heureux	SET PAINTING	LINDA GORDON
	- Heather-Sarah Thomson	Assisted by	- Rae Wahl
	- Brayden Szondi	POSTER DESIGN	LIAM WARD & BRANDEN MARTIN
	- Lacey Andreas	BAR	BLAIR BOHNET
SET DESIGNER	BRANDEN MARTIN		
PROPS	JILLIAN BARBOUR		
	TERESA HOOSE		
SOUND DESIGN	DAVE CRUICKSHANK		
SOUND TECH	WADE GARNER		
LIGHTING TECH	MARCO JANSEN		

ACKNOWLEDGEMENTS

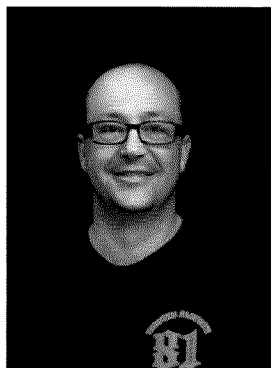
Thanks the following who contributed to the success of this play:

Vern Hyde-Financial Solutions Gordon Law Office The UPS Store
Habitat 4 Humanity dcDigital Productions Medicine Hat Musical Theatre
We apologize if we have missed you.

UPCOMING PRODUCTIONS

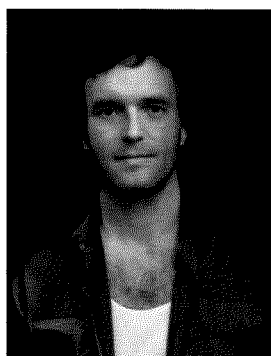
Avenue Q	<i>April 2013</i>
Oliver	<i>November 2013</i>
Snow White & The Magnificent Seven; A 'Panto'	<i>December 2013</i>
Spamalot	<i>March 2014</i>

BIOGRAPHY ON NIC DIETERLE



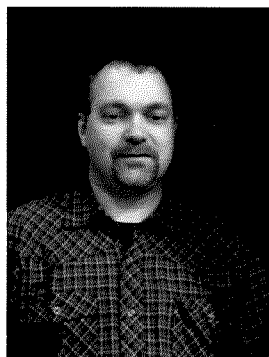
Nic has been active in local theatre since moving here to study for his BFA in 1996. He completed his studies in Lethbridge but chose to return to Medicine Hat because of the welcoming environment he experienced as a student, and because of its vibrant theatre community. He has worked with most of the local theatre groups in many capacities-from set designer to actor to running improv. Workshops. Having been cautioned by his wife to never sing in public, Nic is happy to be acting the first non-musical production of Medicine Hat Musical Theatre's history. TRUE WEST has been a play on Nic's "must do" list.

BIOGRAPHY ON JIM RISSLING



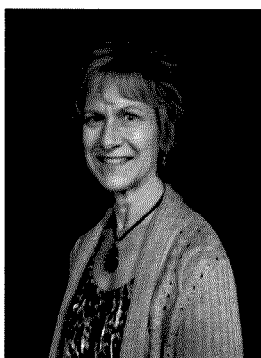
Jim is very pleased for a chance to work on such a great script, with such great people. If your reading this right now he thanks you dearly. In his off time he daydreams about the love of his life, Rachel, and his demon daughter Madalyn. Take Care!

BIOGRAPHY ON DAVE CRUICKSHANK



Dave Cruickshank is no stranger to the world of amateur theatre having been involved with various theatre companies in various cities since 1991. Recently, he has been on the Medicine Hat stage in FOREVER PLAID, THE ODD COUPLE, CLUE THE MUSICAL, and now TRUE WEST. He is also cast in AVENUE Q to be performed in the Playhouse in April 2013 (get your tickets!). Special thanks to his lovely wife and adoring children, to whom he promises he will see again-when spring rehearsals and shows are finished in April...(until the next audition call.)

BIOGRAPHY ON CAROLYN FREEMAN



Carolyn is honoured to be part of the TRUE WEST team and happy to be cast in the role of a "crazy old lady". She has been actively involved in several theatre productions over the past five years and is humbled and amazed by the talent in this city, and by the constant support of the audiences. She is excited about upcoming projects and is looking forward to new ventures both on and off stage. When she is not preparing for an upcoming show, she enjoys...Oh, just a minute, she is constantly involved in productions-often several at a time...Carolyn would like to thank her family for their continued support and her friends for knowing her and liking her anyway...XO.

BIOGRAPHY ON BRANDEN MARTIN



Branden was born and raised and performed in Medicine Hat until he left "home" for 7 years to obtain his diploma in Theatrical Art and Design from Keyano Collage and his BFA in Acting and Performance from the University of Alberta. He has worked with several companies across Canada before returning to his roots to immerse himself in the local theatre scene. Branden was most recently on stage as "Roger" in GREASE and "The Wicked Witch" in WIZARD OF OZ THE PANTO-both Medicine Hat Musical Theatre productions. Look for him as "Princeton" in AVENUE Q in April/2013. Please note that he will also be teaching classes and private lessons. Please contact him at 403-581-7407 for more information.

BIOGRAPHY ON JULIA LAWRENCE



Julia is a 2005 graduate of the Red Deer College Technical Theatre Program where she stage managed THE TROJAN WOMEN, LEARN TO DRIVE, LYSISTRATA and then the Calgary IGNITRE FESTIVALS 2006 one act, DIS/ASSOCIATION. She went on to work in television for Red Deer's local news station CHCA for 2 years as the sound operator for the evening news and then the weekend news director. Now living in Medicine Hat with her husband and two pugs she has stage managed THE OUTSIDERS in 2011 and SPRING AWAKENING in 2012. Julia is thrilled to be involved with the Medicine Hat Musical Theatre and looking forward to theatre in 2013! Enjoy the show and thank you for supporting the arts!

P O S T E R D E S I G N

"The coloration of the poster shows frustration and anger with reds and purples-the colors of bruises and blood. The purple outline at the bottom is not representing a real Arizona desert sky. It represents the brothers' feelings being projected over the landscape as they look back at their mother's house". — Liam Ward

P R E S I D E N T ' S M E S S A G E
L A W R E N C E G O R D O N

*WELCOME TO MUSICAL THEATRE PLAYHOUSE
OUR PERMANENT HOME!*

ITS BEEN ANOTHER VERY BUSY YEAR WITH "CLUE THE MUSICAL" PERFORMED IN MARCH 2012, "GREASE" IN NOVEMBER AND OUR THIRD PANTOMIME, "WIZARD OF OZ", IN DECEMBER CELEBRATING THE CHRISTMAS SEASON. FUTURE SHOWS ARE "AVENUE Q" DIRECTED BY RAMONA ROBINS AND DAVE TOWNSEND IN APRIL/2013; "OLIVER" DIRECTED BY SHANNON CLISH-WELSH IN NOVEMBER/2013. "SNOW WHITE AND THE MAGNIFICENT SEVEN PANTO" DIRECTED BY CAROLYN FREEMAN AND GEORGE BEST IN DEC/2013; AND "SPAMALOT" DIRECTED BY DAVE CANNON AND GEORGE BEST IN MARCH/2014. WE HOPE TO ADD ADDITIONAL SHOWS FOR THE 2013-2014 SEASON.

WE CONTINUE TO IMPROVE THE PLAYHOUSE WITH NEW LIGHTING AND SOUND EQUIPMENT, AS WELL AS MANY OTHER IMPROVEMENTS.

WE APPRECIATE YOUR SUPPORT-WITHOUT AN AUDIENCE, THERE WOULD NOT BE A SHOW.

THANKS TO OUR RETURNING PATRONS AND A SINCERE WELCOME TO OUR NEW PLAYHOUSE THEATRE-GOERS.

LAWRENCE GORDON
PRESIDENT OF
Medicine Hat Musical Theatre

